



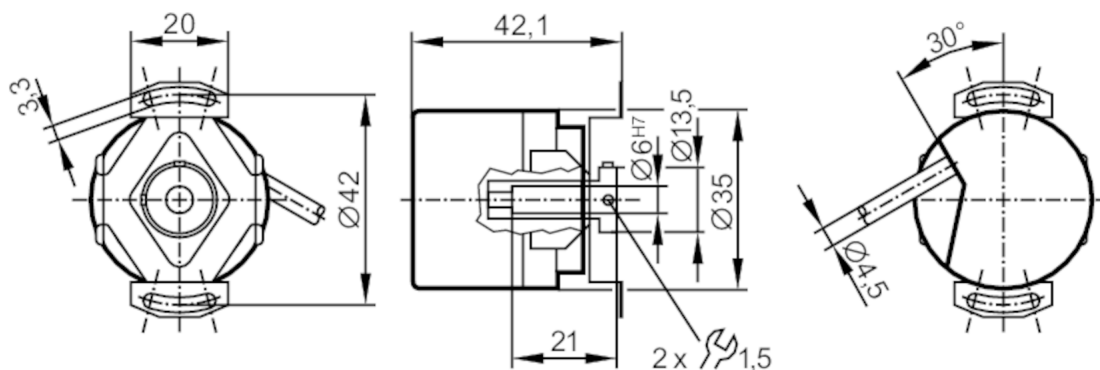
Incremental encoder with hollow shaft

RA-0500-I05/N5

Article no longer available - archive entry

Alternative articles: RA3101 + EVC546

When selecting an alternative article and accessories please note that technical data may differ!



Product characteristics

Resolution	500 resolution
Shaft design	hollow shaft open to one side
Shaft diameter [mm]	6

Application

Function principle	incremental
--------------------	-------------

Electrical data

Operating voltage tolerance [%]	10
Operating voltage [V]	5 DC
Current consumption [mA]	120

Outputs

Electrical design	TTL
Max. current load per output [mA]	20
Switching frequency [kHz]	300
Phase difference A and B [°]	90

Measuring/setting range

Resolution	500 resolution
------------	----------------

Operating conditions

Ambient temperature [°C]	-30...100
Max. relative air humidity [%]	75; (briefly: 95 %)
Protection	IP 64

Tests / approvals

Shock resistance	100 g (6 ms)
Vibration resistance	10 g (55...2000 Hz)



Incremental encoder with hollow shaft

RA-0500-I05/N5

Mechanical data		
Weight	[g]	358
Dimensions	[mm]	Ø 35 / L = 42.1
Materials		aluminium
Max. revolution, mechanical	[U/min]	10000
Max. starting torque	[Nm]	2.5
Reference temperature torque	[°C]	20
Shaft design		hollow shaft open to one side
Shaft diameter	[mm]	6
Shaft fit		H7
Shaft material		steel (1.4104)
Installation depth of shaft	[mm]	6...21
Max. axial shaft misalignment	[mm]	0,5

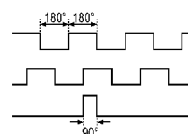
Electrical connection

Cable: 5 m, PUR; radial, can also be used axially

brown	A
green	A inverted
grey	B
pink	B inverted
red	0 index
black	0 index inverted
brown/green	L+ (Up)
white/green	L- 0V (Un)
blue	L+ sensor
white	L- 0 V sensor
lilac	failure inverted
screen	housing

Diagrams and graphs

Pulse diagram



direction of rotation clockwise (looking at the shaft)