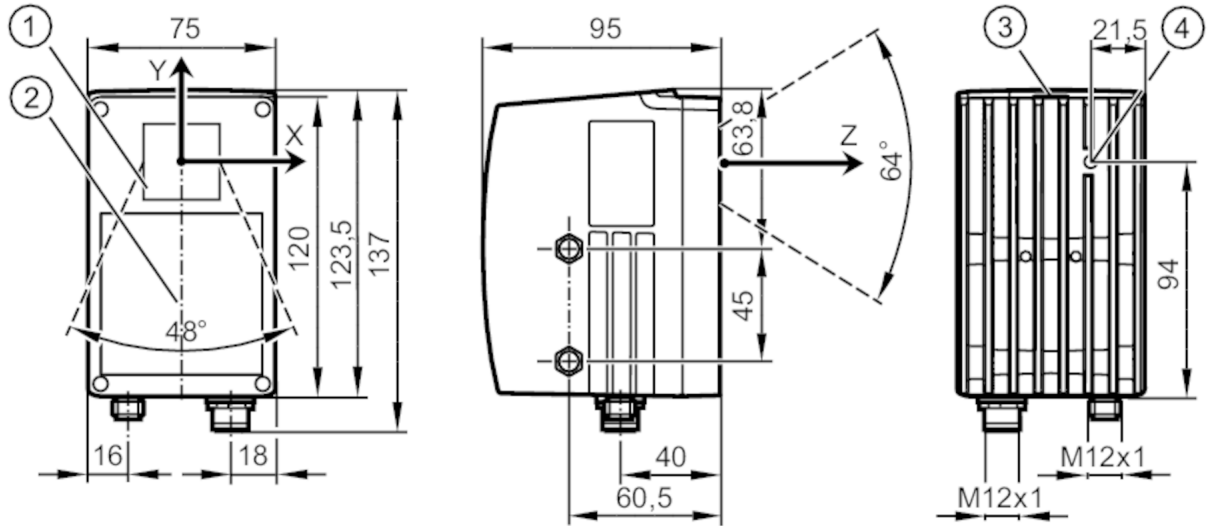


O3D222



3D sensor

O3DIRP3KG/E1/E2/GM/W/64



- 1 lens
- 2 illumination unit
- 3 Display / pushbuttons / LEDs
- 4 focus adjustment screw



Product characteristics

Image resolution	[pixels]	64 x 48
Angle of aperture	[°]	64 x 48
Max. reading rate	[Hz]	20
Dimensions	[mm]	123.5 x 75 x 95

Application

Application	Level monitoring; distance monitoring; volume monitoring
-------------	--

Electrical data

Operating voltage	[V]	20.4...28.8 DC; (EN 61131-2)
Current consumption	[mA]	< 2000; (peak current pulsed; typical value: 600)
Power consumption	[W]	15
Protection class		III
Image sensor		PMD 3D ToF-Chip
Internal lighting		yes

Inputs / outputs

Number of inputs and outputs	Number of digital inputs: 2; Number of digital outputs: 2
------------------------------	---

Inputs

Number of digital inputs	2
Trigger	24 V PNP (IEC 61131-2 Typ 1)
Input circuit of digital inputs	24 V PNP; (configurable; IEC 61131-2 Typ 1)



3D sensor

O3DIRP3KG/E1/E2/GM/W/64

Outputs	
Total number of outputs	2
Number of digital outputs	2; (configurable)
Output function	24 V PNP; (EN 61131-2 Typ 2)
Max. voltage drop switching output DC [V]	1
Max. current load per output [mA]	100
Analogue current output [mA]	4...20
Max. load [Ω]	300
Analogue voltage output [V]	0...10
Min. load resistance [Ω]	10000
Short-circuit protection	yes
Type of short-circuit protection	pulsed
Overload protection	yes
Detection zone	
Operating distance [mm]	200...5500
Note on operating distance	white paper: 200 x 200 mm remission: 90 %
Image resolution [pixels]	64 x 48
Angle of aperture [°]	64 x 48
Max. reading rate [Hz]	20
Software / programming	
Parameter setting options	via two pushbuttons and 10-segment display or via PC / notebook with operating software
Interfaces	
Communication interface	Ethernet
Ethernet	
Number of Ethernet interfaces	1
Transmission standard	10Base-T; 100Base-TX
Transmission rate	10; 100
Protocol	TCP/IP; EtherNet/IP
Factory settings	IP address: 192.168.0.69
	subnet mask: 255.255.255.0
	gateway IP address: 192.168.0.201
	MAC address: see type label
Operating conditions	
Ambient temperature [°C]	-10...50
Storage temperature [°C]	-40...85
Protection	IP 67
Max. immunity to extraneous light [klx]	8; (on the object)

O3D222



3D sensor

O3DIRP3KG/E1/E2/GM/W/64

Tests / approvals		
EMC	EN 61000-6-4	radiation of interference / industrial environments
	EN 61000-6-2	noise immunity / industrial environments
Shock resistance	DIN EN 60068-2-27	30 g 11 ms
Vibration resistance	DIN EN 60068-2-6	2 g 10...150 Hz
Photobiological safety	exempt group; (DIN EN 62471)	
Electrical protection	EN 61131-2	electrical supply only via PELV circuits
Mechanical data		
Weight	[g]	1200
Dimensions	[mm]	123.5 x 75 x 95
Materials	housing: diecast aluminium; front lens: PMMA; display window: PC	
Displays / operating elements		
Display	switching status	4 LED, yellow
		4 x LED, green
		10-segment display, 4-digit
Accessories		
Accessories (supplied)	Protective covers	
Remarks		
Notes	For 8-pole sockets the core colours are not standardised.; Please note the wiring of the sensor and the sockets (see data sheet).	
Pack quantity	1 pcs.	
Electrical connection - Ethernet		
1	TD +	
2	RD +	
3	TD -	
4	RD -	
Connector: 1 x M12		



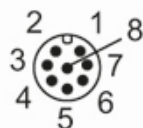
3D sensor

O3DIRP3KG/E1/E2/GM/W/64

Electrical connection - Process connection

1	U+
2	trigger signal
3	0 V
4	OUT 1 analogue output
5	Ready
6	OUT 2
7	IN 1 switching input 1
8	IN 2 switching input 2

Connector: 1 x M12



Other data

Field of view size

measuring range / distance	Length	Width	minimum object surface
200	250	170	7 x 7
1000	1260	870	37 x 37
2000	2520	1740	73 x 73
3000	3780	2610	109 x 109
4000	5040	3480	145 x 145
5500	6930	4790	200 x 200

For reliable detection the object must be detected by at least 2 x 2 pixels