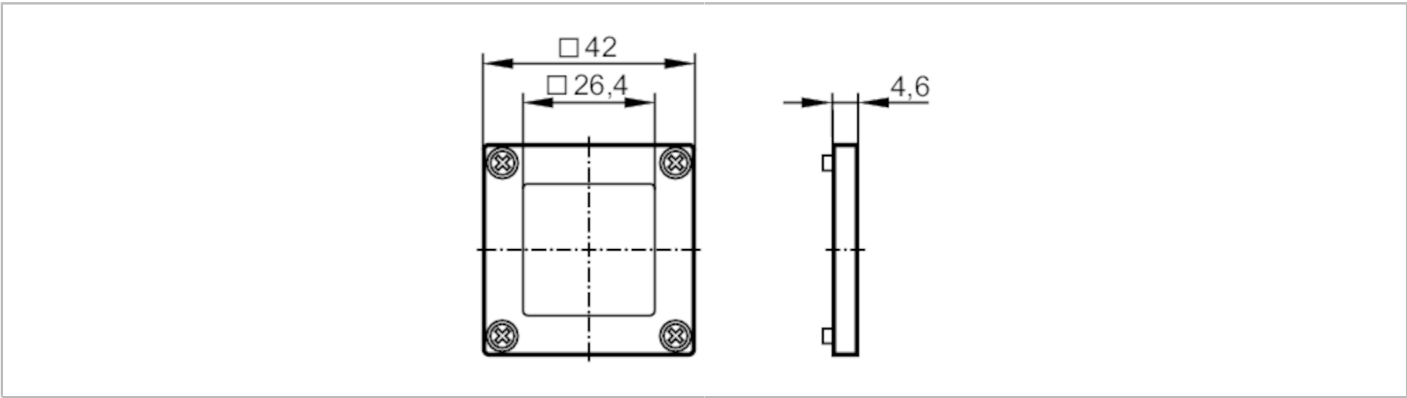




Protective cover

MASKING FRAME FOR O1D



Mechanical data		
Weight	[g]	36.2
Dimensions	[mm]	42 x 4.6 x 42
Materials	bezel: diecast zinc finish black; front pane: PMMA transparent and uncoloured; Sealing: FPM 75 ±5 Shore A; screws: stainless steel	
Accessories		
Items supplied	screws: 4 x M3 x 8	
Remarks		
Remarks	By attaching the protective cover the measured distance value can be changed by up to +5 mm.	
	This deviation influences the specified accuracy.	
	The repeatability remains unchanged.	
	By soiling or scratching the front pane the repeatability and accuracy of the sensor can deteriorate.	
Pack quantity	1 pcs.	