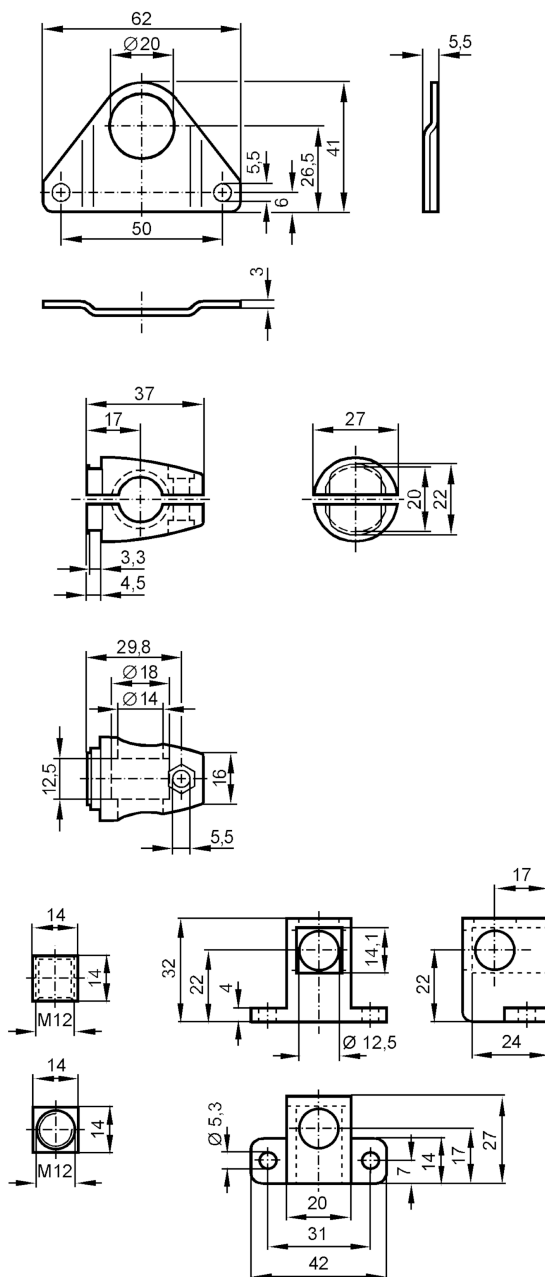


Mounting set for photoelectric sensors

SYSTEM COMPONENT OL RAIL

phase-out article



Application

Design

clamp mounting

Mechanical data

Weight

[g]

362.8

Type of mounting

aluminium profile

Materials

Clamp: diecast zinc; fixture: stainless steel (316Ti/1.4571); CUBE: diecast zinc

Accessories

Items supplied

screw: 1 x M12 x 120

Remarks

Pack quantity

1 pcs.