

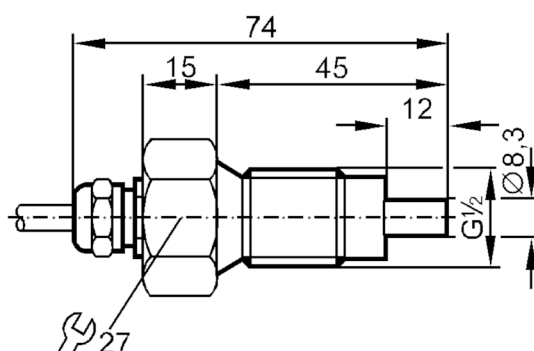
ST3400



Flow sensor for connection to an evaluation unit

STR12AAC

Article no longer available - archive entry



Product characteristics

Process connection	G 1/2 external thread
--------------------	-----------------------

Application

Media	Liquids; aggressive media
Medium temperature [°C]	-25...80
Pressure rating [bar]	5

Liquids

Medium temperature [°C]	-25...80
-------------------------	----------

Electrical data

Connection to control monitor	VS 0100
-------------------------------	---------

Measuring/setting range

Liquids

Setting range [cm/s]	3...300
Greatest sensitivity [cm/s]	3...60

Accuracy / deviations

Temperature gradient [K/min]	15
------------------------------	----

Response times

Response time [s]	2...20
-------------------	--------

Liquids

Response time [s]	2...20
-------------------	--------

Operating conditions

Protection	IP 67
------------	-------

Mechanical data

Housing	threaded type
---------	---------------

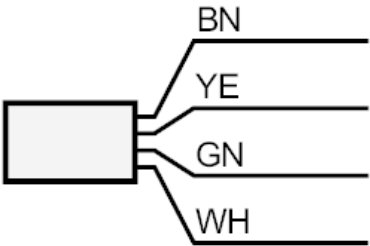
ST3400



Flow sensor for connection to an evaluation unit

STR12AAC

Materials	PTFE
Process connection	G 1/2 external thread
Remarks	
Pack quantity	1 pcs.
Electrical connection	
Cable: 2 m, Silflex-PUR; Maximum cable length: 100 m; 4 x 0.25 mm²	
Connection	



	Core colours :
BN =	brown
WH =	white
YE =	yellow
GN =	green