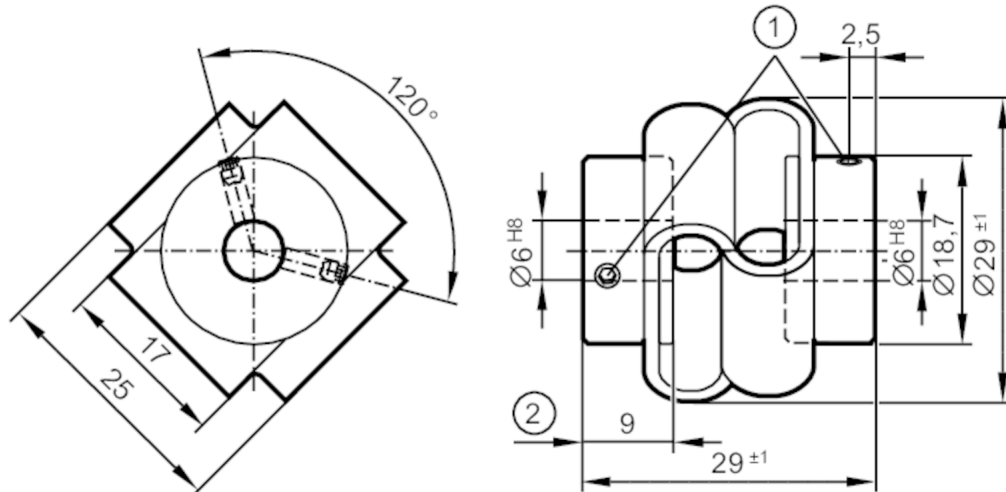


E61435



Double-loop coupling

DL COUPLING V2A 29-6-6-29-SV



- 1 M3 x 4 - ISO 4029 A2 (4x)
2 Depth der Klemmnabe

Operating conditions

Ambient temperature	[°C]	-30...80
---------------------	------	----------

Mechanical data

Weight	[g]	27.6
Materials	shaft adapter: stainless steel (303/1.4305); double-loop coupling: PU	
Tightening torque	[Nm]	tightening torque screws: 100 Ncm
External diameter D	[mm]	29
Inside diameter 1	[mm]	6
Inside diameter 2	[mm]	6
Depth of the clamping hub	[mm]	9
Clamping screw	[mm]	M3 x 4 - ISO 4029 A2 (4x)
Length	[mm]	29
Max. revolution, mechanical	[U/min]	3000
Max. axial shaft misalignment	[mm]	± 2
Max. radial shaft misalignment	[mm]	± 2
Max. angular displacement	[°]	± 10
Rigidity of the torsion spring	[Nm/rad]	13

Remarks

Remarks	The data indicated apply to couplings with the above hub borings at an ambient temperature of 23 °C. The values of radial, angular and axial displacement are maximum values which must not reach their maximum simultaneously while in operation.
Pack quantity	1 pcs.