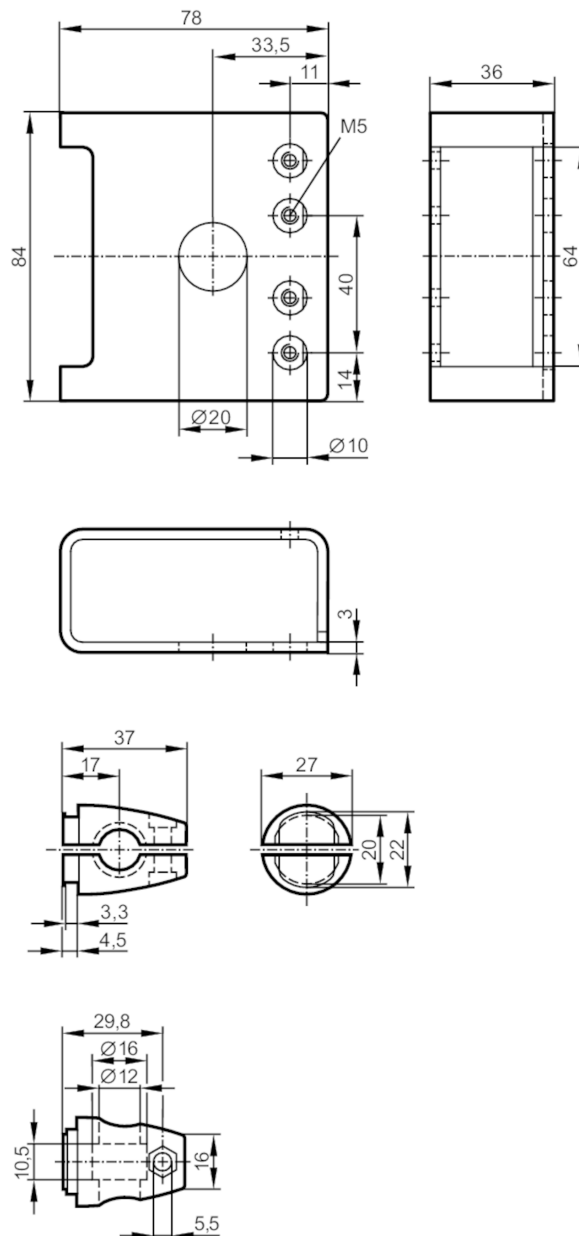


## Mounting set with protective cover for photoelectric sensors

O4 PROTECTIVE BRACKET 500



### Application

Design

clamp mounting, with protective cover

### Mechanical data

Weight

[g]

384

Type of mounting

Mounting rod; ( $\varnothing 12$  mm)

Materials

stainless steel (316L/1.4404); Clamp: stainless steel

### Accessories

Items supplied

head cap screw: 1 x M5 x 16

cylinder screws: 2 x M5 x 30

### Remarks

Pack quantity

1 pcs.