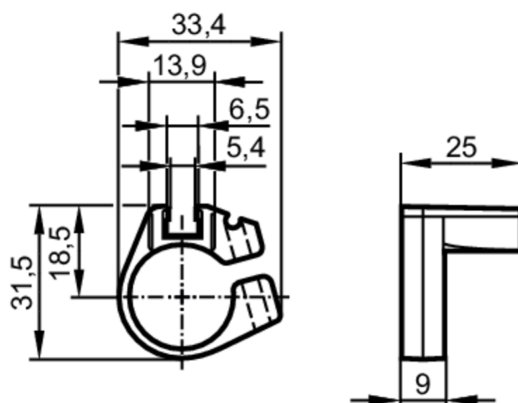


## Clean-line cylinder mounting clamp for cylinder sensors

CLAMP FOR CLEAN LINE CYL D20



### Application

Design

for types MKT

### Operating conditions

Ambient temperature

[°C]

0...50

### Mechanical data

Weight

[g]

9.2

Materials

mounting clamp: POM; fixture: aluminium; screw: stainless steel

Tightening torque

[Nm]

0.5; (Mounting screw)

Piston diameter

[mm]

20

### Accessories

Items supplied

socket head screws: 1 x SW2,5

### Remarks

Pack quantity

1 pcs.

### Diagrams and graphs

Installation

