

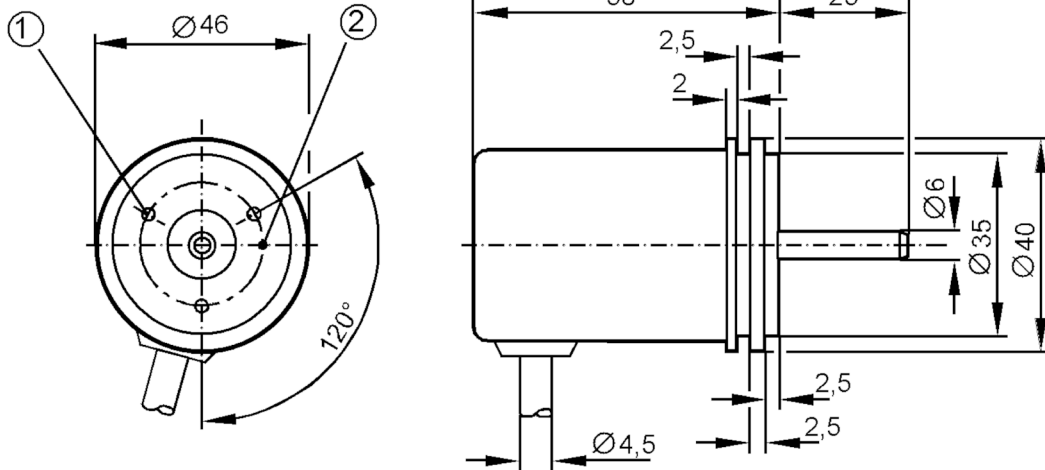
# RS5006



## Solid shaft encoder

RS-0500-I24/NB

Article no longer available - archive entry



- 1 reference mark
- 2 M3 Depth 10 mm



### Electrical data

|                          |            |
|--------------------------|------------|
| Operating voltage [V]    | 10...30 DC |
| Current consumption [mA] | 150        |

### Outputs

|                                   |        |
|-----------------------------------|--------|
| Electrical design                 | HTL    |
| Max. current load per output [mA] | 50     |
| Switching frequency [kHz]         | 50     |
| Type of short-circuit protection  | < 60 s |
| Phase difference A and B [°]      | 90     |

### Measuring/setting range

|            |                |
|------------|----------------|
| Resolution | 500 resolution |
|------------|----------------|

### Operating conditions

|                                |          |
|--------------------------------|----------|
| Ambient temperature [°C]       | -20...70 |
| Storage temperature [°C]       | -30...80 |
| Max. relative air humidity [%] | 98       |
| Protection                     | IP 64    |

### Tests / approvals

|                      |                     |
|----------------------|---------------------|
| Shock resistance     | 30 g (6 ms)         |
| Vibration resistance | 10 g (55...2000 Hz) |

# RS5006



## Solid shaft encoder

RS-0500-I24/NB

| Mechanical data                           |         |                 |
|---|---------|-----------------|
| Dimensions                                | [mm]    | Ø 40 / L = 83   |
| Materials                                 |         | aluminium       |
| Max. revolution, mechanical               | [U/min] | 10000           |
| Max. starting torque                      | [Nm]    | 1               |
| Reference temperature torque              | [°C]    | 20              |
| Shaft design                              |         | solid shaft     |
| Shaft diameter                            | [mm]    | 6               |
| Shaft material                            |         | stainless steel |
| Max. shaft load axial (at the shaft end)  | [N]     | 20              |
| Max. shaft load radial (at the shaft end) | [N]     | 20              |

| Electrical connection |               |  |
|-----------------------|---------------|--|
| Cable: ,4 m; radial   |               |  |
| white                 | A             |  |
| green                 | B             |  |
| yellow                | 0 index       |  |
| brown                 | 10...30V (Up) |  |
| grey                  | 0V (Un)       |  |
| screen                | housing       |  |

| Diagrams and graphs |  |
|---------------------|--|
| Pulse diagram       | <p>Output A<br/>Output B<br/>0 index</p> |

Article no longer available - archive entry