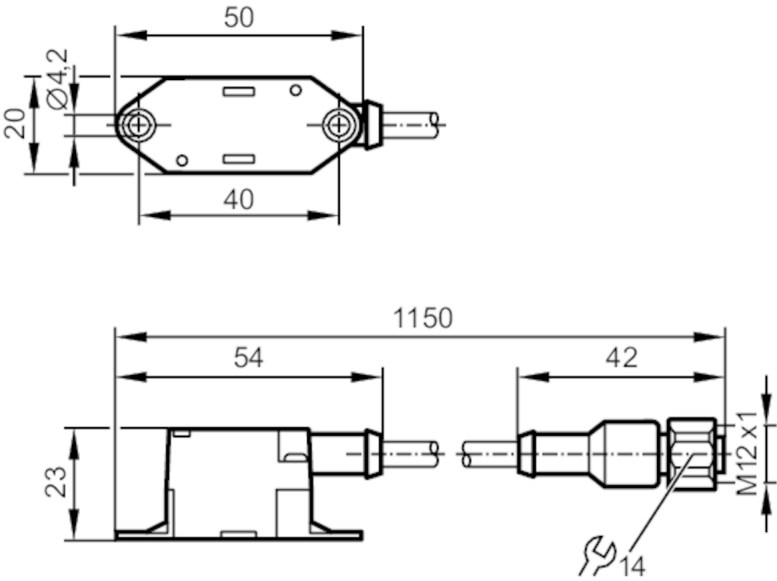




AS-Interface flat cable insulation displacement  
connector

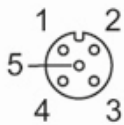
FC connector, M12, V2A, 1m



Application		
Special feature		Gold-plated contacts
Design		AS-i
Electrical data		
Operating voltage	[V]	26.5...31.6 DC
Max. current load total	[A]	2
Operating conditions		
Ambient temperature	[°C]	-20...70
Protection		IP 67
Mechanical data		
Weight	[g]	82.7
Materials		housing upper part: PUR; housing lower part: PA 6.6; screw: stainless steel (303/1.4305); Lock nut: stainless steel (303/1.4305)
Remarks		
Remarks		The flat cable must not end in the splitter. Use a flat cable seal or heat-shrink cap for sealing.
Pack quantity		1 pcs.

Electrical connection	
Cable: 1 m, PVC, Ø 5.75 mm; 2 x 0.75 mm², PVC	

Connector: M12, straight; coding: A; Contacts: gold-plated

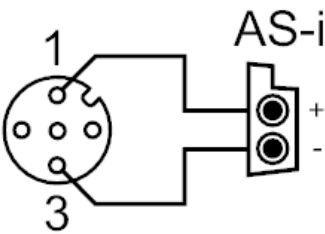




AS-Interface flat cable insulation displacement  
connector

FC connector, M12, V2A, 1m

Connection



1	AS-i +
3	AS-i -