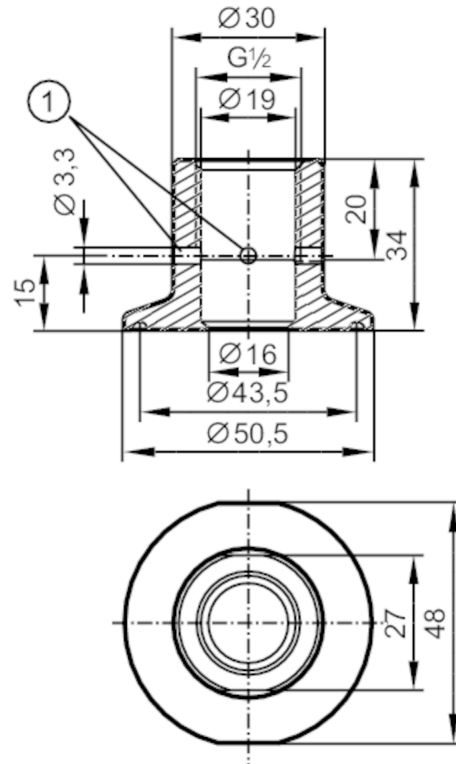




## Process adapter Tri-Clamp

ADAPT G1/2-CLAMP (1") 3A



1 Leakage port



CRN EC 1935/2004 EHEDG Certified FCM FDA

## Application

Design		with leakage port
Pressure rating [bar]		25
MAWP (for applications according to CRN) [bar]		25

## Mechanical data

Weight [g]		203
Materials		stainless steel (316L/1.4435)
Sensor connection		G 1/2 sealing cone
Process connection		Clamp DN25...DN40 (1...1,5") DIN 32676 (ISO 2852)
Surface characteristics Ra/Rz of the wetted parts		0.4 / 4

## Remarks

Pack quantity		1 pcs.
---------------	--	--------