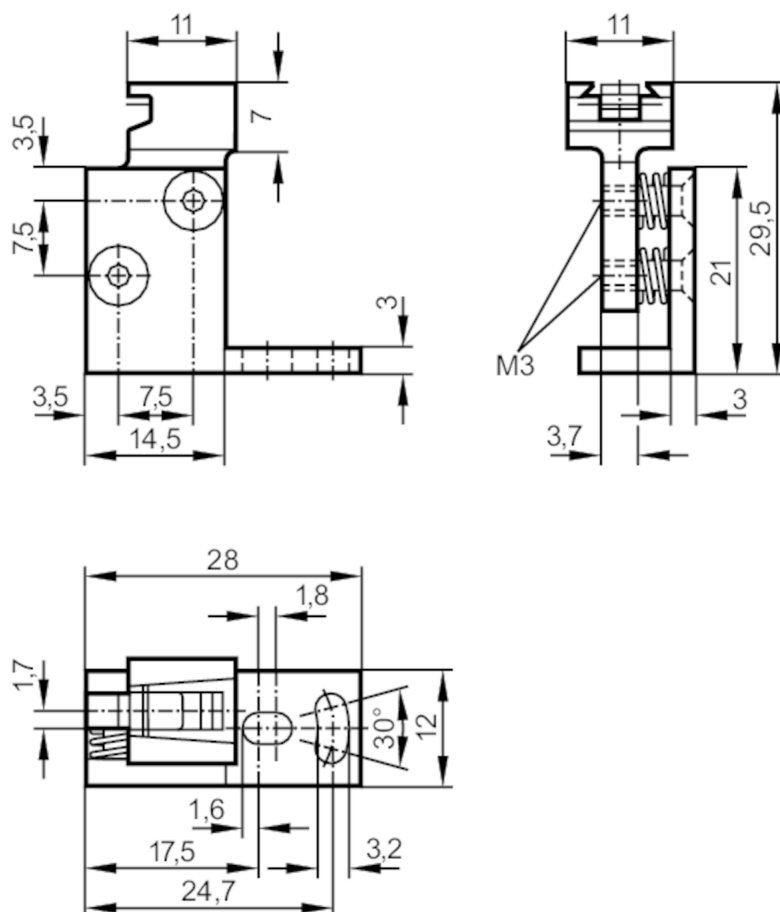


Fixture for mounting and fine adjustment of laser sensors

SYSTEM COMPONENT OJ LASER



Application

Design for front lens

Mechanical data

Weight	[g]	35.5
Dimensions	[mm]	29.5 x 12 x 28
Materials		diecast zinc
Alignment range		fine adjustment in 2 axes $\pm 2^\circ$

Remarks

Pack quantity 1 pcs.