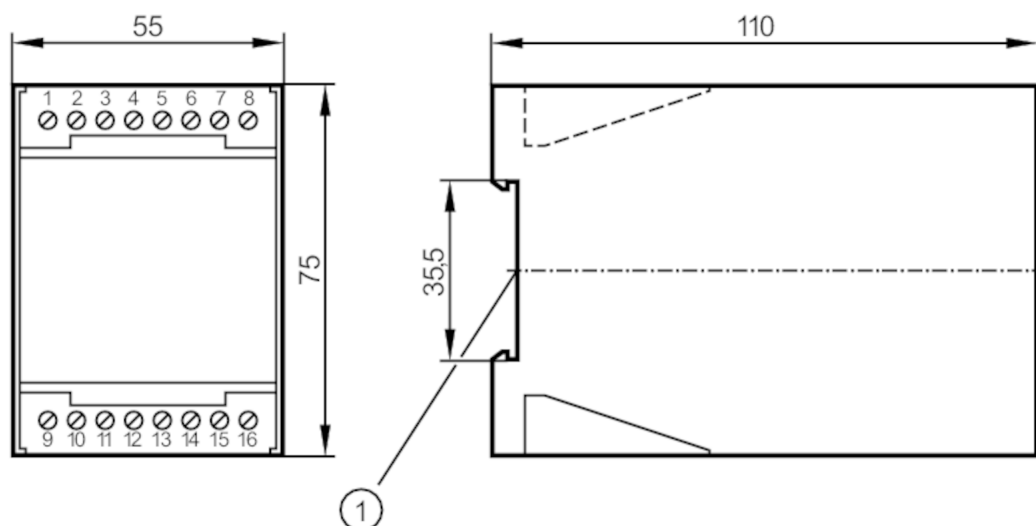


Control monitor for flow sensors

VS0100/110VAC/EX

Article no longer available - archive entry



1 mounting on DIN rail

Application

Application	Flow monitoring
-------------	-----------------

Electrical data

Operating voltage tolerance	[%]	-10...10
Operating voltage	[V]	< 110 AC
Max. power consumption	[VA]	2
Power-on delay time	[s]	< 30

Outputs

Switching function flow monitoring	relay energised when flow is present
------------------------------------	--------------------------------------

Software / programming

Adjustment of the switch point	potentiometer
--------------------------------	---------------

Operating conditions

Ambient temperature	[°C]	0...60
Protection		IP 40
Protection rating terminals		IP 20

Tests / approvals

Approval	PTB Ex-93.C.2006
----------	------------------

Safety classification

Designation	in protection rating intrinsic safety	
Voltage	[V]	12,6
Current	[mA]	186
Power	[mW]	586
[Ex ia] IIC designation	[EEx ib] IIC	
[Ex ia] IIC inductance	0.5 mH	



Control monitor for flow sensors

VS0100/110VAC/EX

[Ex ia] IIC capacitance	1200 nF
-------------------------	---------

Mechanical data

Housing	housing for DIN rail mounting
Dimensions [mm]	75 x 55 x 110
Materials	plastics

Displays / operating elements

Display	function	LED, red
---------	----------	----------

Electrical connection

Relay circuit AC	... 250 AV,...6 A cos j > 0,7
Relay circuit DC	...60 DC,...0,6 A, L/R < 200 ms /...24 DC, ...4 A, L/R < 200 ms

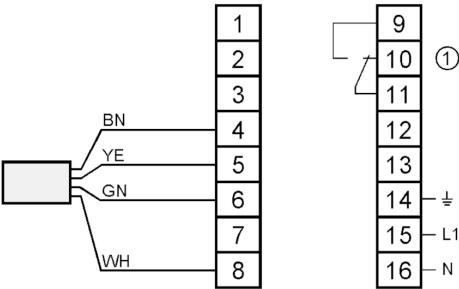
Remarks

Pack quantity	1 pcs.
---------------	--------

Electrical connection

terminals: 16 x ...2.5 mm²

Connection



- 1:
- Relais Flow monitoring
- Core colours :
- BN = brown
- WH = white
- YE = yellow
- GN = green