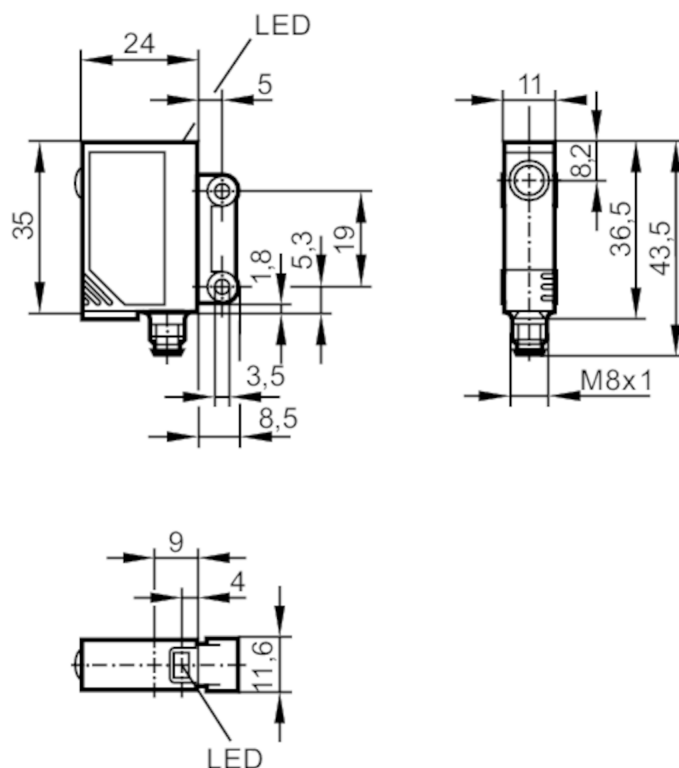


Through-beam sensor receiver

OJE-DPKG/SO/AS



Product characteristics

Housing	rectangular
---------	-------------

Application

Function principle	Through-beam sensor
--------------------	---------------------

Electrical data

Operating voltage	[V]	10...30 DC
Current consumption	[mA]	< 10
Protection class		III
Reverse polarity protection		yes

Outputs

Electrical design		PNP
Output function		dark-on mode
Max. voltage drop switching output DC	[V]	2.5
Permanent current rating of switching output DC	[mA]	200
Switching frequency DC	[Hz]	1000
Short-circuit protection		yes
Type of short-circuit protection		pulsed
Overload protection		yes



Through-beam sensor receiver

OJE-DPKG/SO/AS

Detection zone		
Transmitter / receiver		receiver
Range [m]		< 10
Range adjustable		no
Operating conditions		
Ambient temperature [°C]		-25...60
Protection		IP 67
Tests / approvals		
EMC	EN 60947-5-2	
MTTF [years]		1152
Mechanical data		
Weight [g]		15
Housing		rectangular
Dimensions [mm]		35 x 11 x 24
Materials		ABS; SEPS
Lens material		PMMA
Lens alignment		side lens
Displays / operating elements		
Display	switching status	1 x LED, yellow
Remarks		
Remarks	operating voltage "supply class 2" according to cULus	
Pack quantity		1 pcs.
Electrical connection		

Connector: 1 x M8; coding: A



Connection

