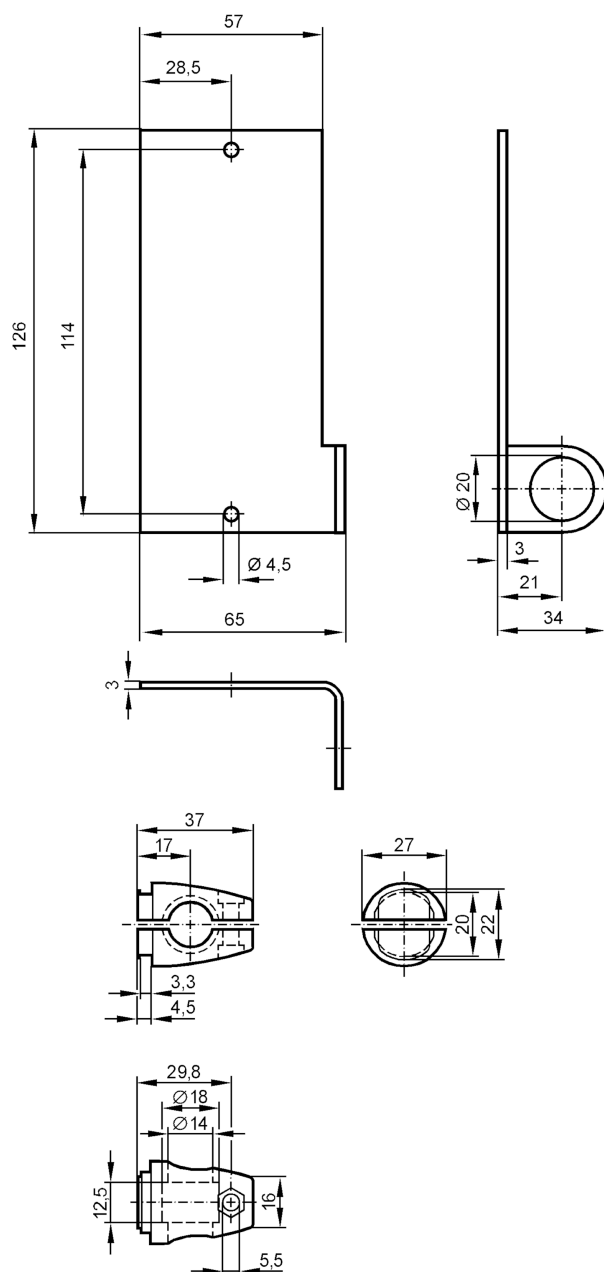


Mounting set for reflectors

SYSTEM COMPONENT REFL BOLT



Application

Design

clamp mounting, for reflector, 126 x 55 mm

Mechanical data

Weight

[g]

439.5

Type of mounting

free-standing; (M12)

Materials

fixture: stainless steel (316Ti/1.4571); Clamp: stainless steel (1.4408)

Accessories

Items supplied

screw: 1 x M12 x 120

Remarks

Pack quantity

1 pcs.