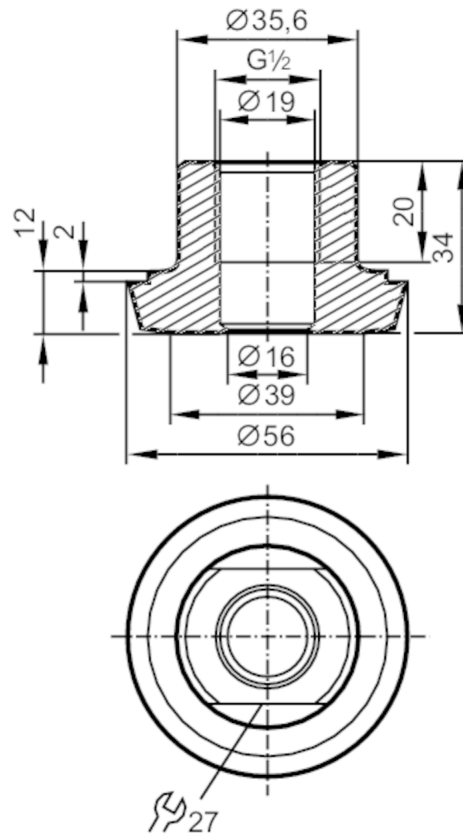


Process adapter hygienic pipe fitting

ADAPT G1/2-DIN11851 DN40

EC 1935/2004 FCM 

Application

Pressure rating	[bar]	40
-----------------	-------	----

Tests / approvals

Pressure Equipment Directive	A possible classification to PED depends on the application and has to be carried out by the user / operator.
------------------------------	---

Safety instructions	The compatibility between medium and product material has to be checked in all applications.
---------------------	--

Mechanical data

Weight	[g]	341.5
Materials		stainless steel (316L/1.4435)
Sensor connection		G 1/2 sealing cone
Process connection		hygienic pipe fitting DN40 (1,5") DIN 11851
Surface characteristics Ra/Rz of the wetted parts		0.4 / 4
Hygienic equipment class to DIN 11866		H4

Remarks

Pack quantity	1 pcs.
---------------	--------