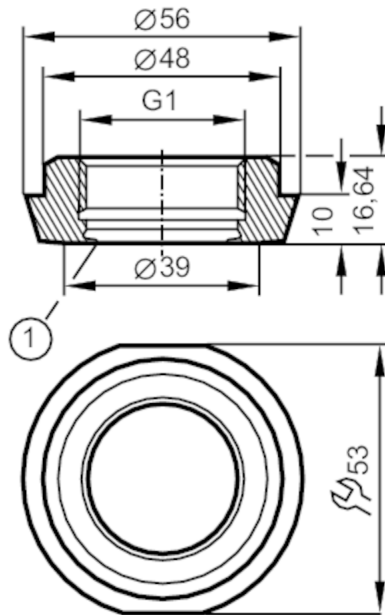


Process adapter hygienic pipe fitting

ADAPT IFM-DIN11851 DN40/1.5"



1 sealing edge

EC 1935/2004 FCM 

| Application | | |
|---------------------------------------|---|-----|
| Pressure rating | [bar] | 40 |
| Tests / approvals | | |
| Pressure Equipment Directive | A possible classification to PED depends on the application and has to be carried out by the user / operator. | |
| Safety instructions | The compatibility between medium and product material has to be checked in all applications. | |
| Mechanical data | | |
| Weight | [g] | 199 |
| Materials (wetted parts) | stainless steel (316L/1.4435) ; surface characteristics : Ra<0,4 / Rz 4 | |
| Sensor connection | G 1 internal thread Aseptoflex Vario | |
| Process connection | hygienic pipe fitting DN40 (1,5") DIN 11851 | |
| Sealing | metal to metal | |
| Hygienic equipment class to DIN 11866 | H4 | |
| Remarks | | |
| Pack quantity | 1 pcs. | |