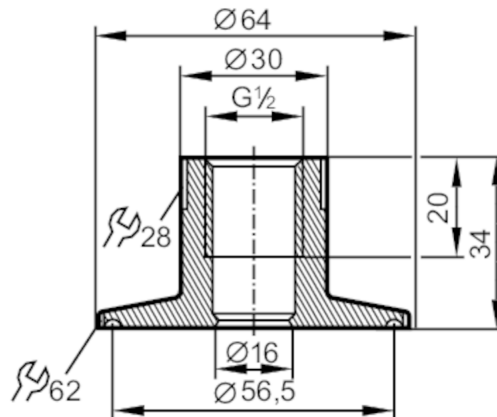




Process adapter Tri-Clamp

ADAPT G1/2-CLAMP DIN32676/2



CRN EC 1935/2004 EHEDG Tested FCM FDA

Application		
Pressure rating	[bar]	16
MAWP (for applications according to CRN)	[bar]	16
Tests / approvals		
Pressure Equipment Directive	A possible classification to PED depends on the application and has to be carried out by the user / operator.	
Safety instructions	The compatibility between medium and product material has to be checked in all applications.	
Mechanical data		
Weight	[g]	269
Materials	stainless steel (316L/1.4435)	
Sensor connection	G 1/2 sealing cone	
Process connection	Clamp DN50 (2") DIN 32676 (ISO 2852)	
Surface characteristics Ra/Rz of the wetted parts	0.4 / 4	
Remarks		
Pack quantity	1 pcs.	