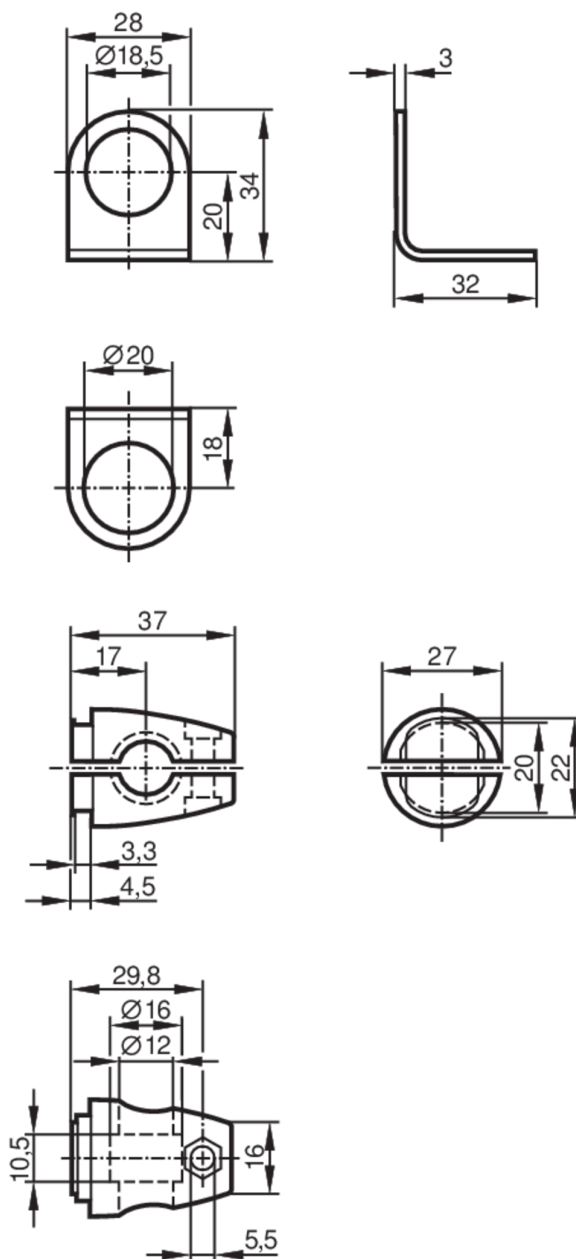


Mounting set for position sensors

SYSTEM COMPONENT M18 BOLT



Application

Design

clamp mounting

Mechanical data

Weight

[g]

183.5

Type of mounting

free-standing; (M10)

Dimensions

[mm]

 $\varnothing 18.5$

Materials

fixture: stainless steel (316Ti/1.4571); Clamp: stainless steel (1.4408)

Accessories

Items supplied

head cap screw: 1 x M10 x 55

Remarks

Pack quantity

1 pcs.