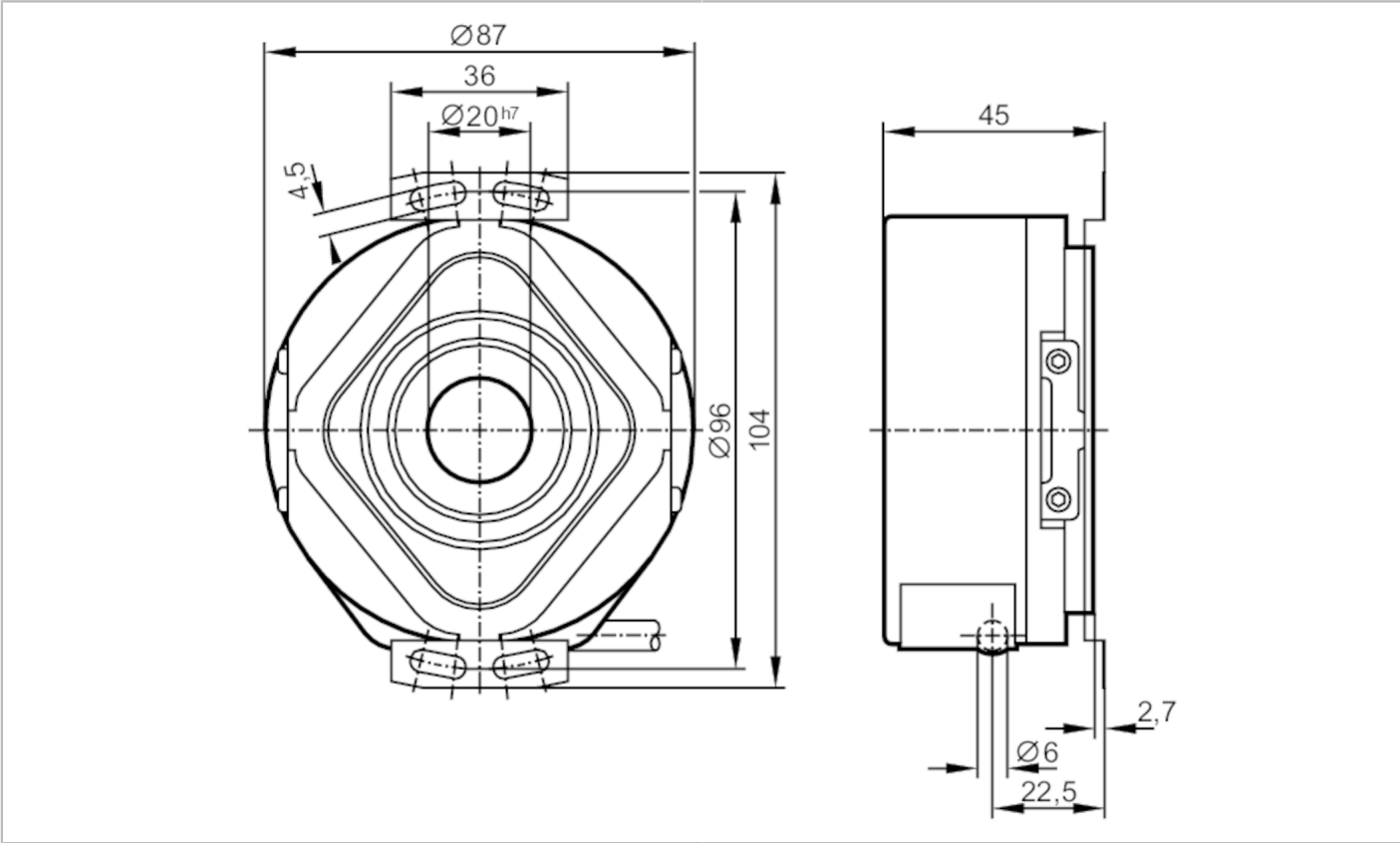




Incremental encoder with hollow shaft

RP-1024-I05/N10

Article no longer available - archive entry



Product characteristics		
Resolution		1024 resolution
Shaft design		continuous hollow shaft
Shaft diameter	[mm]	20
Electrical data		
Operating voltage tolerance	[%]	10
Operating voltage	[V]	5 DC
Current consumption	[mA]	< 150
Outputs		
Electrical design		TTL
Max. current load per output	[mA]	20
Switching frequency	[kHz]	300
Phase difference A and B	[°]	90
Measuring/setting range		
Resolution		1024 resolution
Operating conditions		
Ambient temperature	[°C]	-30...60
Note on ambient temperature		higher temperature upon request
		for the diagram see the installation instructions



Incremental encoder with hollow shaft

RP-1024-I05/N10

Storage temperature	[°C]	-30...100
Max. relative air humidity	[%]	98
Protection		IP 64

Tests / approvals

Shock resistance		100 g (6 ms)
Vibration resistance	EN 60068-2-6	200 g (50...2000 Hz)

Mechanical data

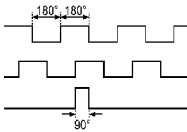
Dimensions	[mm]	Ø 87 / L = 45
Materials		aluminium
Max. revolution, mechanical	[U/min]	6000
Max. starting torque	[Nm]	10
Reference temperature torque	[°C]	20
Shaft design		continuous hollow shaft
Shaft diameter	[mm]	20
Shaft fit		H7
Shaft material		steel (1.4104)
Installation depth of shaft	[mm]	10
Max. axial shaft misalignment	[mm]	1,5

Electrical connection

Cable: 1 m, PUR; radial

brown	A
green	A inverted
grey	B
pink	B inverted
red	0 index
black	0 index inverted
blue	L+ sensor
white	0V sensor
brown/green	L+ (Up)
white/green	0V (Un)
lilac	failure inverted
screen	housing

Diagrams and graphs

Pulse diagram	 <p>direction of rotation clockwise (looking at the shaft)</p>
---------------	--