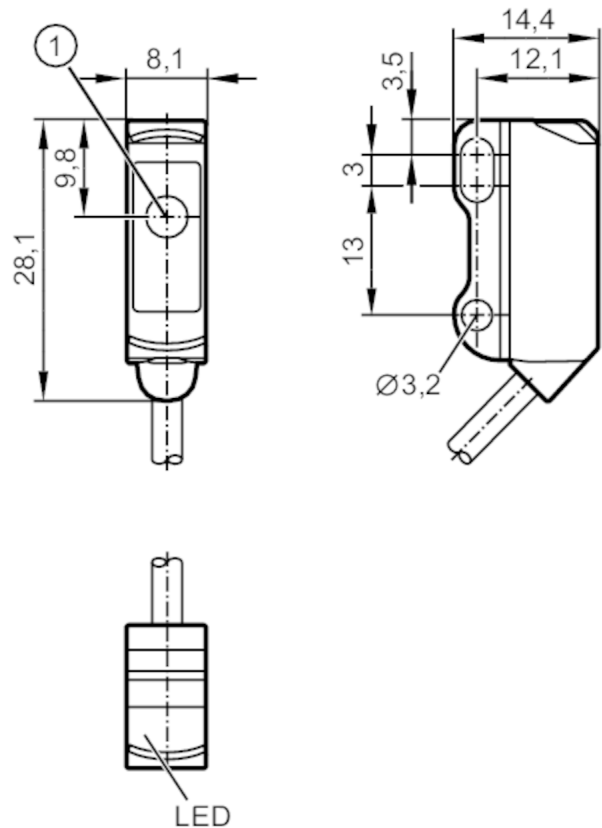


O8S200



Through-beam sensor transmitter

O8S-00KG/2,0M



1: light emission



Product characteristics

Type of light	red light
Housing	rectangular

Application

Function principle	Through-beam sensor
--------------------	---------------------

Electrical data

Operating voltage	[V]	10...30 DC
Current consumption	[mA]	12; ((24 V))
Protection class		III
Reverse polarity protection		yes
Type of light		red light
Wave length	[nm]	633

Detection zone

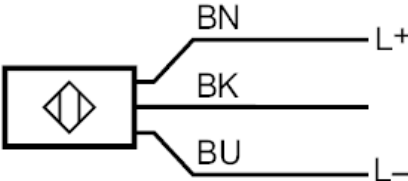
Transmitter / receiver		transmitter
Range	[m]	< 3
Max. light spot diameter	[mm]	200
Light spot dimensions refer to		at maximum range

O8S200



Through-beam sensor transmitter

O8S-00KG/2,0M

Operating conditions		
Ambient temperature	[°C]	-25...60
Protection		IP 65; IP 67
Tests / approvals		
EMC	EN 60947-5-2	
MTTF	[years]	2912
UL approval	Ta	-25...60 °C
	Enclosure type	Type 1
	power supply	Limited Voltage/Current
	UL Approval no.	E027
	File number UL	E174191
Mechanical data		
Weight	[g]	40
Housing		rectangular
Dimensions	[mm]	28.1 x 8.1 x 14.4
Materials		housing: ABS; stainless steel (316L/1.4404)
Lens material		PMMA
Lens alignment		side lens
Displays / operating elements		
Display	switching status	1 x LED, yellow
	operation	1 x LED, green
Remarks		
Pack quantity		1 pcs.
Electrical connection		
Cable: 2 m, PVC, black, Ø 2.9 mm; 2 x 0.08 mm ²		
Connection		
		
BN	Core colours	
BK		
BU		
	brown	
	black	
	blue	

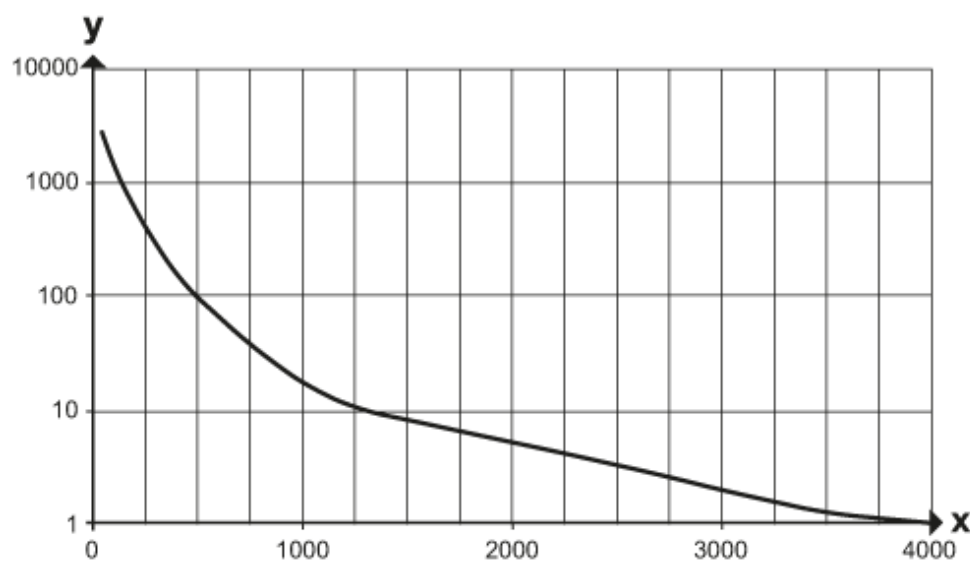


Through-beam sensor transmitter

O8S-OOKG/2,0M

Diagrams and graphs

excess gain graph



x: distance [mm]

y: excess gain factor