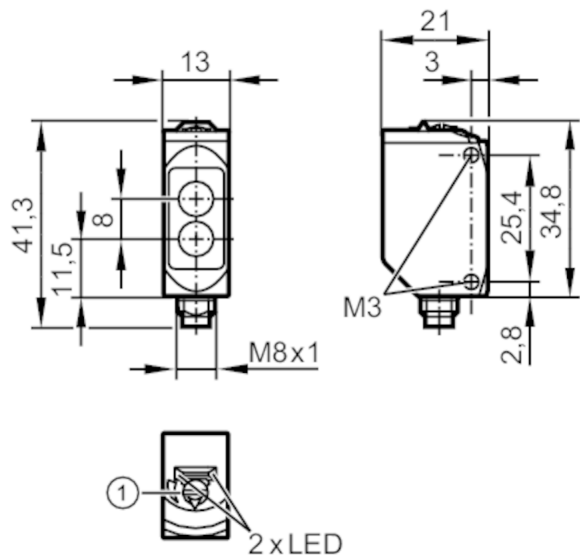


O6T210



Diffuse reflection sensor

O6T-CPKG/AS/4P



- 1 potentiometer sensitivity receiver in upper lens transmitter in lower lens



Product characteristics

Type of light	red light
Housing	rectangular

Application

Function principle	Diffuse reflection sensor
--------------------	---------------------------

Electrical data

Operating voltage	[V]	10...30 DC
Current consumption	[mA]	16; ((24 V))
Protection class		III
Reverse polarity protection		yes
Reverse polarity protection		yes
Type of light		red light
Wave length	[nm]	633

Outputs

Electrical design		PNP
Output function		complementary
Max. voltage drop switching output DC	[V]	0.5
Minimum load current	[mA]	10
Max. leakage current	[mA]	0.1
Permanent current rating of switching output DC	[mA]	100
Switching frequency DC	[Hz]	1000
Short-circuit protection		yes

O6T210



Diffuse reflection sensor

O6T-CPKG/AS/4P

Type of short-circuit protection	pulsed
----------------------------------	--------

Detection zone	
Range [mm]	5...500; (white paper 200 x 200 mm 90% remission)
Setting range [mm]	5...500
Range adjustable	yes
Max. light spot diameter [mm]	15
Light spot dimensions refer to	at maximum range

Response times	
Response time [s]	< 300

Operating conditions	
Ambient temperature [°C]	-10...60
Protection	IP 65; IP 67

Tests / approvals		
EMC	EN 60947-5-2	
MTTF [years]		1172
UL approval	UL Approval no.	E009

Mechanical data	
Weight [g]	15.8
Housing	rectangular
Dimensions [mm]	46 x 13 x 21
Materials	housing: ABS; PPSU
Lens material	PMMA
Lens alignment	side lens
Sealing material	EPDM
Tightening torque [Nm]	0.5; (screws)

Displays / operating elements		
Display	switching status	1 x LED, yellow
	operation	1 x LED, green

Remarks	
Remarks	operating voltage "supply class 2" according to cULus
Pack quantity	1 pcs.

Electrical connection

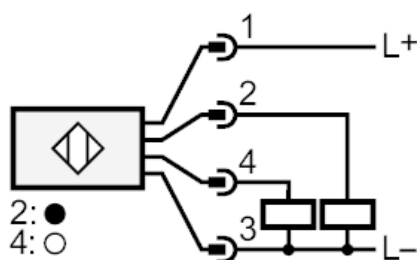
Connector: 1 x M8; coding: A; Locking: metal, coated; Sealing: EPDM



Diffuse reflection sensor

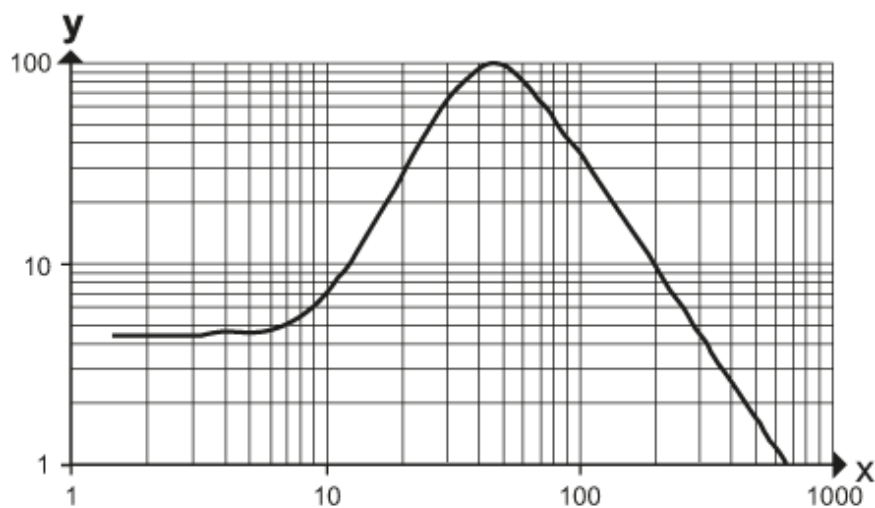
O6T-CPKG/AS/4P

Connection



Diagrams and graphs

excess gain graph



x: distance [mm]

y: excess gain factor