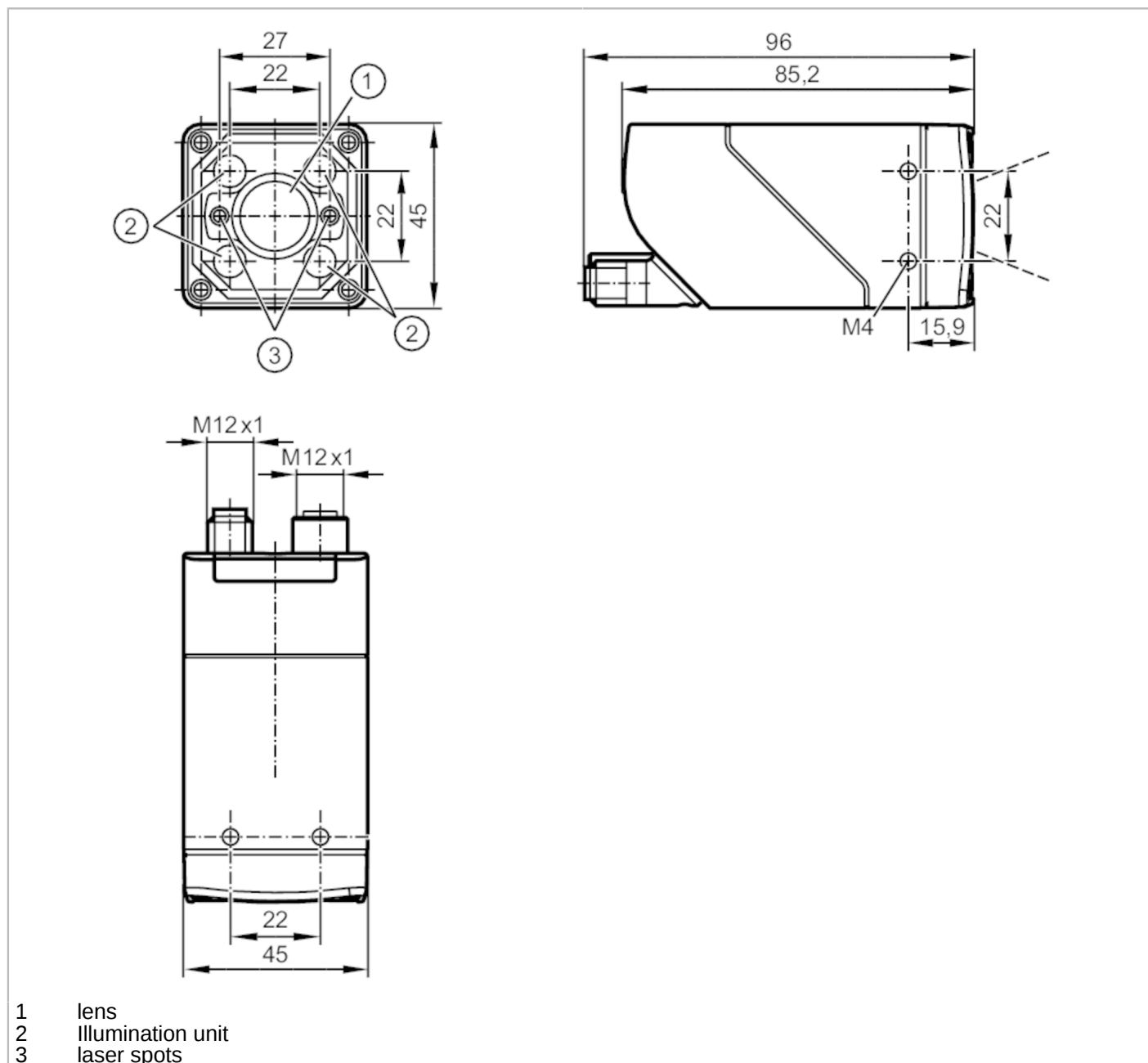


O2I502



1D/2D code readers

O2IRRDKG/E1/E2/EF/VF/TB/W



- 1 lens
- 2 illumination unit
- 3 laser spots



Product characteristics

Type of light		red light
Image resolution	[pixels]	1280 x 960
Lens type		Wide angle
Max. reading rate	[Hz]	40
Dimensions	[mm]	45 x 45 x 85

Application

Special feature		polarisation filter
-----------------	--	---------------------



1D/2D code readers

O2IRRDKG/E1/E2/EF/VF/TB/W

Electrical data				
Operating voltage [V]	18...30 DC			
Current consumption [mA]	< 400; (24V DC)			
Protection class	III			
Reverse polarity protection	yes			
Type of light	red light			
Wave length [nm]	617			
Image sensor	CMOS image sensor black/white			
Internal lighting	yes			
Laser marking	yes			
Inputs / outputs				
Number of inputs and outputs	Number of digital inputs: 1; Number of digital outputs: 2			
Inputs				
Number of digital inputs	1			
Trigger	external; 24 V PNP/NPN (IEC 61131-2 Typ 3); TCP/IP; EtherNet/IP; internal			
Outputs				
Total number of outputs	2			
Number of digital outputs	2; (configurable)			
Output function	24 V PNP/NPN			
Max. voltage drop switching output DC [V]	1			
Max. current load per output [mA]	100			
Short-circuit protection	yes			
Type of short-circuit protection	pulsed			
Overload protection	yes			
Detection zone				
Field of view size [mm]	Operating distance	field of view		
	35	25 x 19		
	300	184 x 138		
	500	304 x 228		
1000	604 x 453			
Operating distance [mm]	> 35			
Image resolution [pixels]	1280 x 960			
Lens type	Wide angle			
Readable codes	Interleaved 2-of-5; Industrial 2-of-5; Code 39; Code 93; Code 128; Pharmacode; Codabar; EAN8; EAN8 Add-On 2; EAN8 Add-On 5; EAN13; EAN13 Add-On 2; EAN13 Add-On 5; UPC-A; UPC-A Add-On 2; UPC-A Add-On 5; UPC-E; UPC-E Add-On 2; UPC-E Add-On 5; GS1 DataBar Omnidirectional; GS1 DataBar Truncated; GS1 DataBar Stacked; GS1 DataBar Stacked Omnidirectional; GS1 DataBar Limited; GS1 DataBar Expanded; GS1 DataBar Expanded Stacked; GS1 - 128; MSI Barcode; ECC200; PDF-417; QR; Micro-QR; Aztec Code; GS1 ECC200; GS1 QR Code; GS1 Aztec Code			
Polarisation filter available	yes			
Omnidirectional reading	yes			
Max. inclination to the image plane [°]	45			
Max. reading rate [Hz]	40			



1D/2D code readers

O2IRRDKG/E1/E2/EF/VF/TB/W

Software / programming		
Parameter setting options	teach button; via PC with ifm Vision Assistant	
Interfaces		
Communication interface	Ethernet	
Ethernet		
Number of Ethernet interfaces	1	
Transmission standard	10Base-T; 100Base-TX	
Transmission rate	10 MBit/s; 100 MBit/s	
Protocol	TCP/IP; EtherNet/IP	
Factory settings	IP address: 192.168.0.69	
	subnet mask: 255.255.255.0 (Class C)	
	gateway IP address: 192.168.0.201	
	MAC address: see type label	
Usage type	parameter setting; data transmission	
Operating conditions		
Ambient temperature	[°C]	-10...50
Storage temperature	[°C]	-40...70
Protection		IP 65
Tests / approvals		
EMC	EN 61000-6-4 radiation of interference	industrial environments
	EN 61000-6-2 noise immunity	industrial environments
Shock resistance	EN 60068-2-27	50 g 11 ms / not repetitive
	EN 60068-2-27	40 g 6 ms / repetitive
Vibration resistance	EN 60068-2-6	2 g (10 ... 150 Hz)
Laser protection class	1	
Notes on laser protection	Caution:	laser light
	laser class:	1
		EN / IEC60825-1:2007
		EN / IEC60825-1:2014
	Complies with 21 CFR 1040 except for deviations pursuant to Laser Notice No. 50, dated June 2007.	
Photobiological safety	exempt group; (EN 62471)	
Electrical protection	EN 61010-2-201	electrical supply only via PELV circuits
Mechanical data		
Weight	[g]	603
Dimensions	[mm]	45 x 45 x 85
Materials	housing: diecast zinc powder-coated; front lens: Gorillaglas; LED window: PC; pushbutton: POM; plug: stainless steel; Sealing: FKM	
Displays / operating elements		
Display	function	2 x LED, green
	function	2 x LED, yellow
	Teach-Funktion	1 x LED, green
	Teach-Funktion	1 x LED, yellow
Operating elements	1 x	Teach-Taste



1D/2D code readers

O2IRRDKG/E1/E2/EF/VF/TB/W

Accessories	
Accessories (optional)	Operating software
	Mounting accessories
	Adapter cable
	protective panes and filter panes

Remarks	
Pack quantity	1 pcs.

Electrical connection

Electrical connection - Ethernet

- | | |
|---|------|
| 1 | TxD+ |
| 2 | RxD+ |
| 3 | TxD- |
| 4 | RxD- |

Connector: 1 x M12



Electrical connection - supply

- | | |
|---|--|
| 1 | U+ |
| 2 | trigger input |
| 3 | 0 V |
| 4 | switching output 1 configurable |
| 5 | switching output 2 configurable /
trigger output with external illumination |

Connector: 1 x M12

