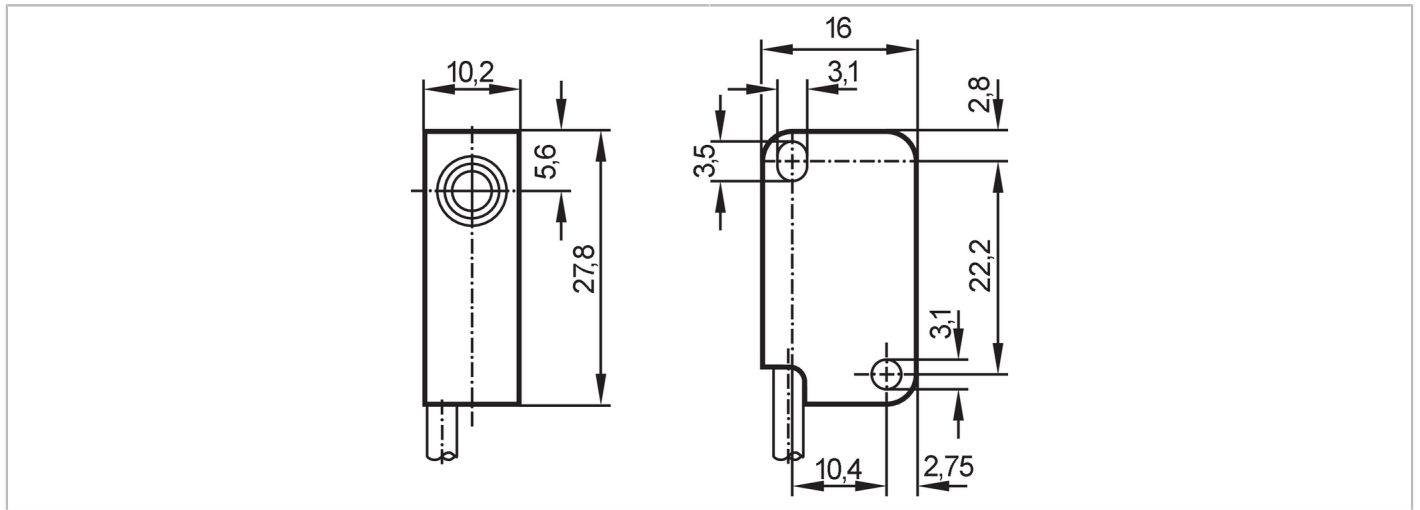


# NS5002



## Inductive NAMUR sensor

IS-2002-NOLED/1D/1G



Product characteristics	
Electrical design	NAMUR
Output function	normally closed
Sensing range [mm]	2
Housing	rectangular
Dimensions [mm]	28 x 10 x 16
Electrical data	
Connection to switching amplifiers	yes
Switching amplifiers	connection to certified intrinsically safe circuits with the max. values: U = 15 V / I = 50 mA / P = 120 mW
Nominal voltage DC [V]	8.2; (1kΩ)
Supply voltage DC [V]	7.5...30; (when used outside the hazardous area)
Current consumption [mA]	< 1; (disabled; conductive: > 2,1)
Outputs	
Electrical design	NAMUR
Output function	normally closed
Permanent current rating of switching output DC [mA]	30; (when used outside the hazardous area)
Switching frequency DC [Hz]	800
Detection zone	
Sensing range [mm]	2
Real sensing range Sr [mm]	2 ± 10 %
Accuracy / deviations	
Correction factor	steel: 1 / stainless steel: 0.7 / brass: 0.5 / aluminium: 0.4 / copper: 0.3
Hysteresis [% of Sr]	1...15
Switch point drift [% of Sr]	-10...10
Operating conditions	
Ambient temperature [°C]	-20...70

# NS5002



## Inductive NAMUR sensor

IS-2002-NOLED/1D/1G

Protection	IP 67
------------	-------

### Tests / approvals

Approval	PTB 01 ATEX 2191; BVS 04 ATEX E 153 X; IECEx BVS 06.0003X						
ATEX marking	<table border="1"> <tr> <td>II 1G Ex ia IIB T6 Ga Ta -20...70°C</td> </tr> <tr> <td>II 1G Ex ia IIB T5 Ga Ta -20...80°C</td> </tr> <tr> <td>II 2G Ex ia IIC T6 Gb Ta -20...70°C</td> </tr> <tr> <td>II 2G Ex ia IIC T5 Gb Ta -20...80°C</td> </tr> <tr> <td>II 1D Ex ia IIIC T200 90°C Da Ta: -20...70°C</td> </tr> <tr> <td>II 1D Ex ia IIIC T200 100° C Da Ta: -20...80°C</td> </tr> </table>	II 1G Ex ia IIB T6 Ga Ta -20...70°C	II 1G Ex ia IIB T5 Ga Ta -20...80°C	II 2G Ex ia IIC T6 Gb Ta -20...70°C	II 2G Ex ia IIC T5 Gb Ta -20...80°C	II 1D Ex ia IIIC T200 90°C Da Ta: -20...70°C	II 1D Ex ia IIIC T200 100° C Da Ta: -20...80°C
II 1G Ex ia IIB T6 Ga Ta -20...70°C							
II 1G Ex ia IIB T5 Ga Ta -20...80°C							
II 2G Ex ia IIC T6 Gb Ta -20...70°C							
II 2G Ex ia IIC T5 Gb Ta -20...80°C							
II 1D Ex ia IIIC T200 90°C Da Ta: -20...70°C							
II 1D Ex ia IIIC T200 100° C Da Ta: -20...80°C							

EMC	EN 60947-5-6
-----	--------------

Shock/vibration resistance	30 g (11 ms) / 10-55 Hz (1 mm)
----------------------------	--------------------------------

MTTF [years]	4776
--------------	------

### Safety classification

Max. internal capacitance [nF]	80
Max. internal inductance [µH]	110

### Mechanical data

Weight [g]	85
Housing	rectangular
Mounting	flush mountable
Dimensions [mm]	28 x 10 x 16
Materials	housing: PBT

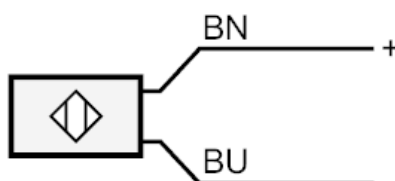
### Remarks

Pack quantity	1 pcs.
---------------	--------

### Electrical connection

Cable: 2 m, PVC; 2 x 0.14 mm<sup>2</sup>

### Connection



Core colours :  
 BN = brown  
 BU = blue