

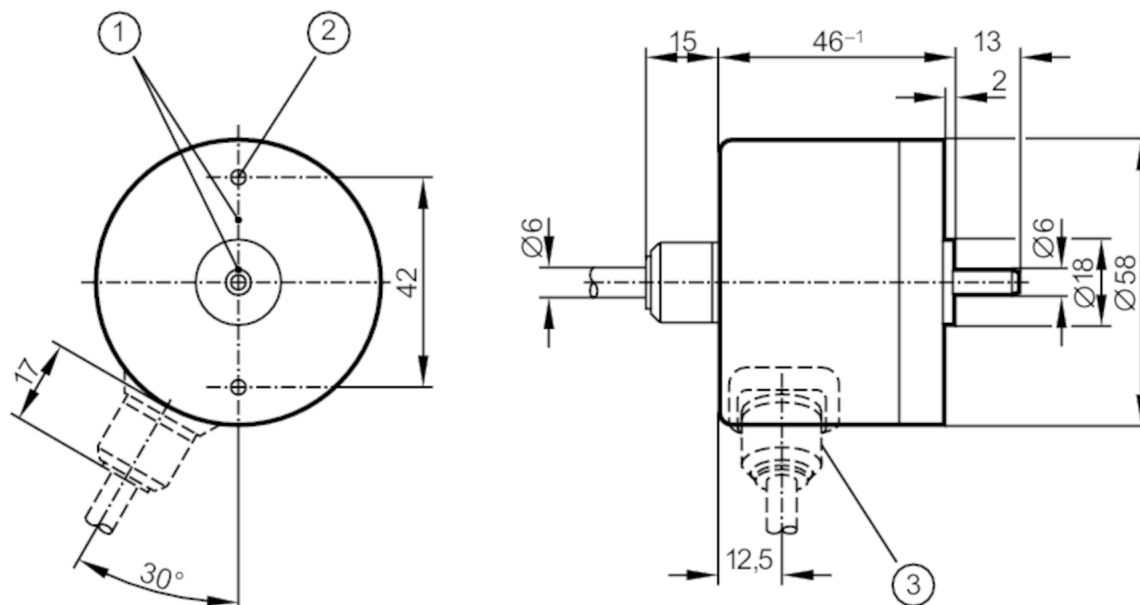
RC1010

Incremental encoder with solid shaft

RC-0250-I05/L2



Article no longer available - archive entry



- 1 reference mark
- 2 M3 Depth 5 mm



Product characteristics

| | |
|---------------------|----------------|
| Resolution | 250 resolution |
| Shaft design | solid shaft |
| Shaft diameter [mm] | 6 |

Electrical data

| | |
|---------------------------------|------|
| Operating voltage tolerance [%] | 10 |
| Operating voltage [V] | 5 DC |
| Current consumption [mA] | 150 |

Outputs

| | |
|-----------------------------------|-----|
| Electrical design | TTL |
| Max. current load per output [mA] | 20 |
| Switching frequency [kHz] | 300 |
| Phase difference A and B [°] | 90 |

Measuring/setting range

| | |
|------------|----------------|
| Resolution | 250 resolution |
|------------|----------------|

Operating conditions

| | |
|--------------------------------|-----------|
| Ambient temperature [°C] | -20...100 |
| Storage temperature [°C] | -30...100 |
| Max. relative air humidity [%] | 98 |
| Protection | IP 64 |



Incremental encoder with solid shaft

RC-0250-I05/L2

Tests / approvals

| | |
|----------------------|---------------------|
| Shock resistance | 100 g (6 ms) |
| Vibration resistance | 10 g (55...2000 Hz) |

Mechanical data

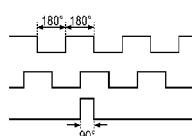
| | |
|---|----------------|
| Dimensions [mm] | Ø 58 / L = 46 |
| Materials | aluminium |
| Max. revolution, mechanical [U/min] | 12000 |
| Max. starting torque [Nm] | 1 |
| Reference temperature torque [°C] | 20 |
| Shaft design | solid shaft |
| Shaft diameter [mm] | 6 |
| Shaft material | steel (1.4104) |
| Max. shaft load axial (at the shaft end) [N] | 10 |
| Max. shaft load radial (at the shaft end) [N] | 20 |

Electrical connection

Cable: 2 m, PUR; axial

| | |
|-------------|------------------|
| brown | A |
| green | A inverted |
| grey | B |
| pink | B inverted |
| red | 0 index |
| black | 0 index inverted |
| blue | L+ sensor |
| white | 0V sensor |
| brown/green | L+ (Up) |
| white/green | 0V (Un) |
| lilac | failure inverted |
| screen | housing |

Diagrams and graphs

| | |
|---------------|--|
| Pulse diagram |  <p>direction of rotation clockwise (looking at the shaft)</p> |
|---------------|--|