

PN3320



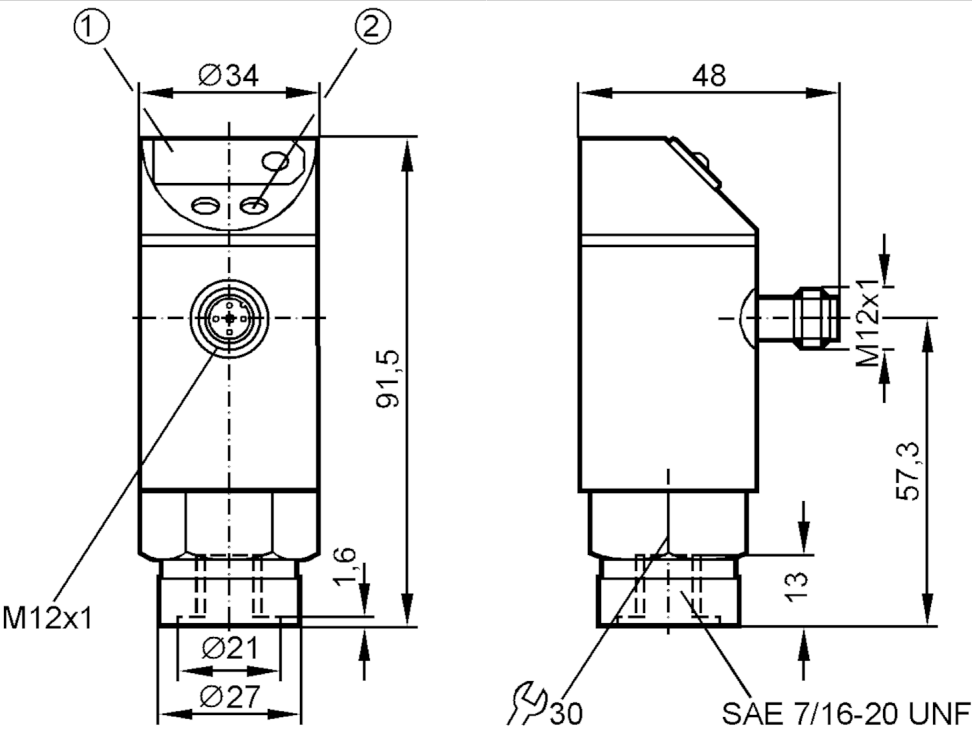
Pressure sensor with display

PN-600PSBU76-KFPKG/US/ IV

Article no longer available - archive entry

Alternative articles: PN3000

When selecting an alternative article and accessories please note that technical data may differ!



- 1 7-segment LED display
- 2 programming button



Product characteristics

Number of inputs and outputs	Number of digital outputs: 1; Number of analogue outputs: 1
Measuring range [psi]	0...6000
Process connection	threaded connection 7/16" - 20 UNF internal thread

Application

Application	for industrial applications
Media	liquids and gases
Conditionally suitable for	For gaseous media the application is limited to max. 25 bar.
Medium temperature [°C]	-25...80
Min. bursting pressure [psi]	14000
Pressure rating [psi]	8500
Type of pressure	relative pressure

Electrical data

Operating voltage [V]	20...30 DC
Current consumption [mA]	< 60
Reverse polarity protection	yes
Power-on delay time [s]	0.2
Integrated watchdog	yes



Pressure sensor with display

PN-600PSBU76-KFPKG/US/ IV

Inputs / outputs												
Number of inputs and outputs			Number of digital outputs: 1; Number of analogue outputs: 1									
Outputs												
Total number of outputs			2									
Output signal			switching signal; analogue signal; (configurable)									
Electrical design			PNP									
Number of digital outputs			1									
Max. voltage drop switching output DC [V]			2									
Permanent current rating of switching output DC [mA]			250									
Number of analogue outputs			1									
Analogue current output [mA]			4...20									
Max. load [Ω]			500									
Short-circuit protection			yes									
Type of short-circuit protection			pulsed									
Overload protection			yes									
Measuring/setting range												
Measuring range [psi]			0...6000									
Set point SP [psi]			60...6000									
Reset point rP [psi]			30...5970									
In steps of [psi]			30									
Accuracy / deviations												
Switch point accuracy [% of the final value]			< ± 1,5									
Repeatability [% of the final value]			< ± 0,25; (with temperature fluctuations < 10 K)									
Characteristics deviation [% of the final value]			< ± 1,0									
Temperature drift per 10 K			< ± 0.3									
Response times												
Switching frequency for a given set response time of one output			Response time (dAP) [ms]	3	6	10	17	30	60	125	250	500
			Switching frequency [Hz]	170	80	50	30	16	8	4	2	1
Response time [ms]			at rectangular pressure characteristic; switch point (SPx) = 70 %; reset point (rPx) = 30 %									
Delay time programmable dS, dr [s]			0, 0,2,...10, 11,...50									
Max. response time analogue output [ms]			3									
Software / programming												
Adjustment of the switch point			programming button									
Operating conditions												
Ambient temperature [°C]			-25...80									

PN3320



Pressure sensor with display

PN-600PSBU76-KFPKG/US/ IV

Storage temperature	[°C]	-40...100
Protection		IP 67

Tests / approvals

EMC	EN 61000-4-2 ESD	4 kV CD / 8 kV AD
	EN 61000-4-3 HF radiated	10 V/m
	EN 61000-4-4 Burst	2 kV
	EN 61000-4-6 HF conducted	10 V
Shock resistance	DIN IEC 68-2-27	50 g (11 ms)
Vibration resistance	DIN IEC 68-2-6	20 g (10...2000 Hz)

Mechanical data

Materials	EPDM/X; FKM; NBR; PBT; PC; stainless steel (304/1.4301)
Materials (wetted parts)	FKM; ceramics; stainless steel (303/1.4305)
Min. pressure cycles	100 million
Process connection	threaded connection 7/16" - 20 UNF internal thread

Displays / operating elements

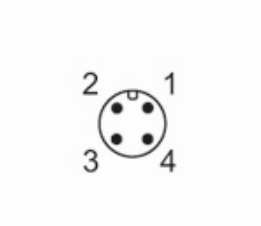
Display	switching status	LED, red
	function display	7-segment LED display
	measured values	7-segment LED display

Remarks

Pack quantity	1 pcs.
---------------	--------

Electrical connection

Connector: 1 x M12; coding: A



Connection

