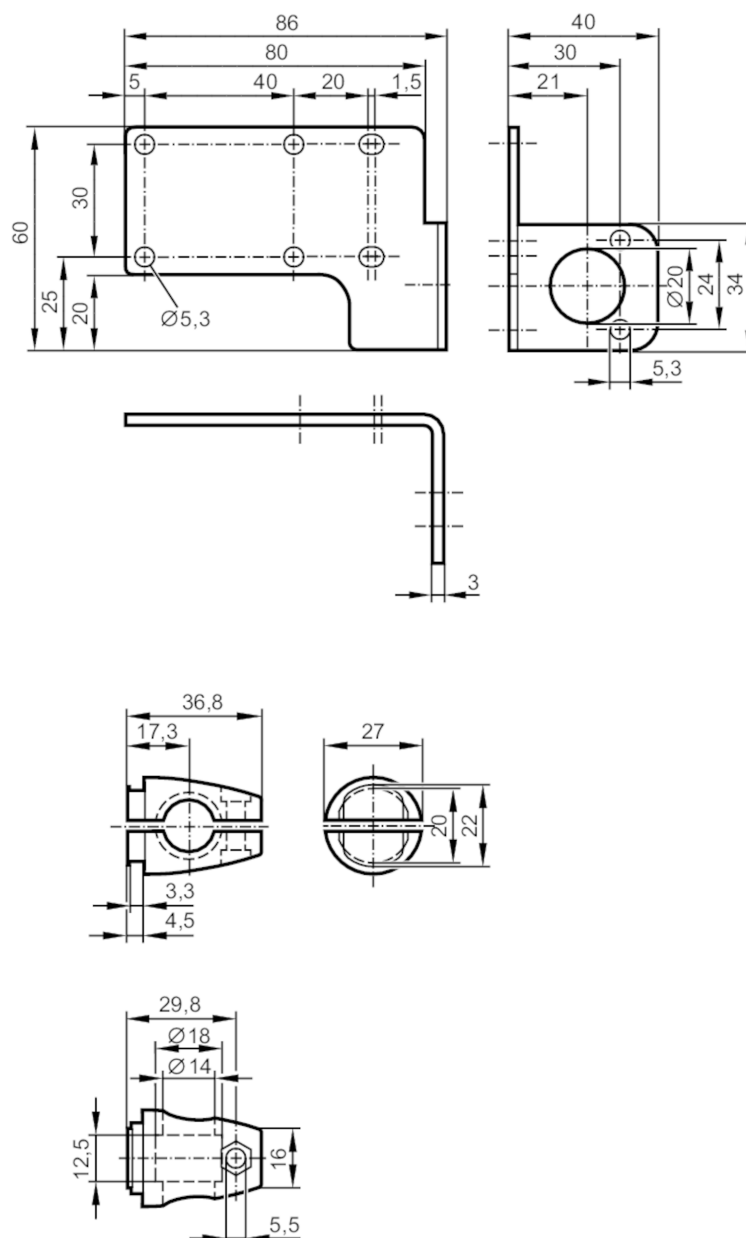


Mounting set for position sensors

MOUNTING BRACKET ANGLED



Application

Design	clamp mounting, angled, only for flush-mountable sensors
--------	--

Mechanical data

Weight	[g]	175.8
Type of mounting		Mounting rod; (\varnothing 14 mm)
Materials		Clamp: stainless steel (1.4408); fixture: stainless steel (316Ti/1.4571)

Remarks

Pack quantity	1 pcs.
---------------	--------