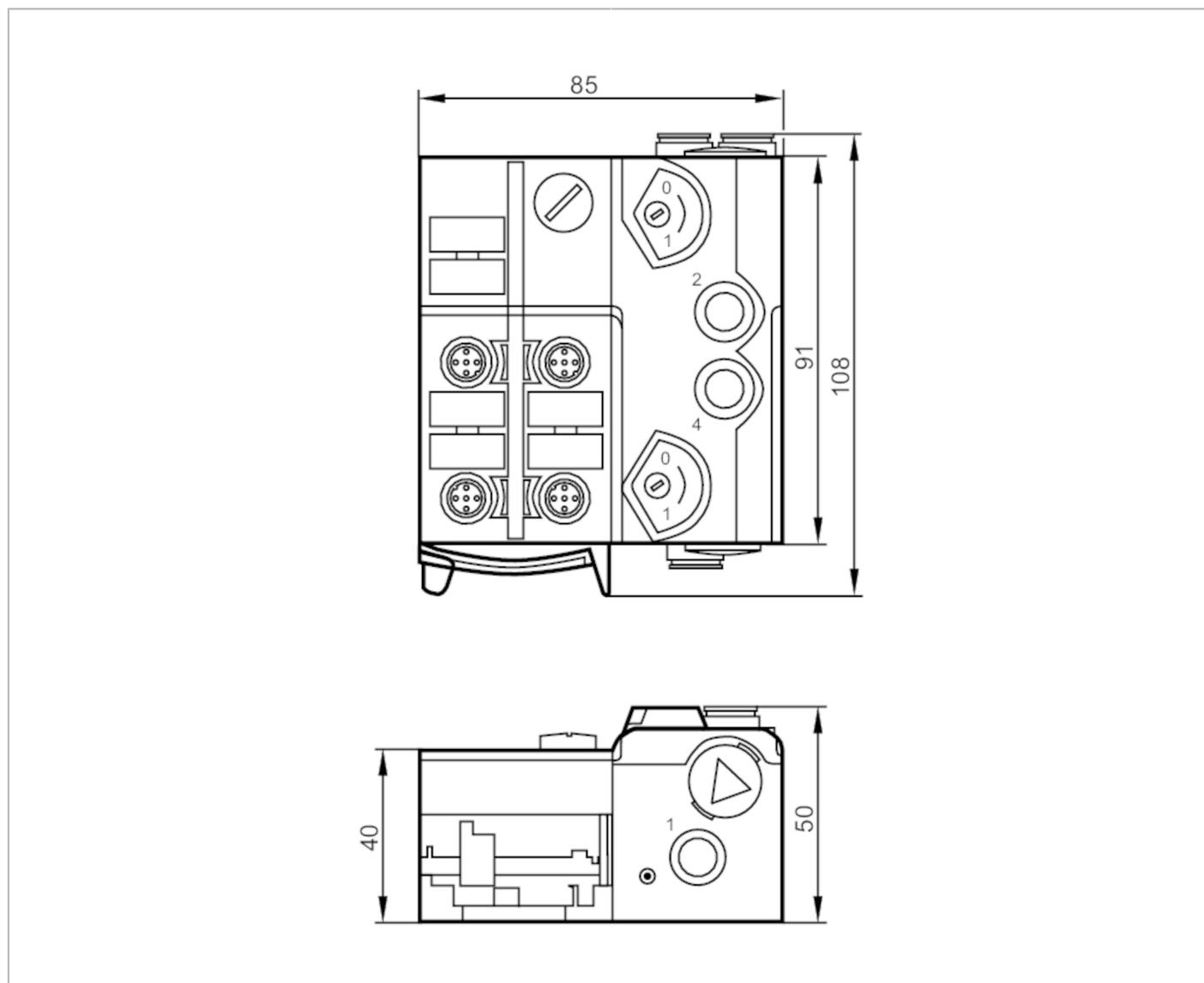


# AC5227



## AS-Interface Airbox with quick mounting technology

AirBox 2x3/2 2DI IP67



Application		
Medium temperature	[°C]	-10...50
Electrical data		
Operating voltage	[V]	26.5...31.6 DC
Max. current consumption from AS-i	[mA]	180
Integrated watchdog		yes
Inputs / outputs		
Number of inputs and outputs		Number of digital inputs: 2; Number of pneumatic outputs: 2



## AS-Interface Airbox with quick mounting technology

AirBox 2x3/2 2DI IP67

Inputs					
Number of digital inputs	2				
Input circuit of digital inputs	PNP				
Sensor supply of the inputs	AS-i				
Voltage supply [V]	20...30; (via flat cable)				
Max. total current rating of inputs [mA]	100				
Input current High [mA]	6...10				
Input current Low [mA]	0...2				
Min. switching level high signal [V]	11				
Digital inputs protected against short circuits	yes				
Outputs					
Electrical design	AS-i				
Number of pneumatic outputs	2				
Operating conditions					
Ambient temperature [°C]	-10...55				
Protection	IP 67				
Tests / approvals					
EMC	EN 50295 IEC 61000-6-2				
MTTF [years]	321				
AS-i classification					
AS-i version	2.11 + 3.0				
AS-i addressing	addressing socket				
Extended addressing mode possible	no				
AS-i profile	S-3.F.F				
AS-i I/O configuration [hex]	3				
AS-i ID code [hex]	F.F				
AS-i certificate pending	yes				
Assignment of the data bits	data bit	D0	D1	D2	D3
	input	1	2	3	4
	socket	I-1	I-2	-	-
	pin	2+4	2+4	-	-
	pneumatic output	-	-	2	4



## AS-Interface Airbox with quick mounting technology

AirBox 2x3/2 2DI IP67

Mechanical data	
Weight [g]	378.5
Type of mounting	AS-i flat cables directly connectable
Materials	PA; POM; piercing contacts: CuSn6 nickel-plated and tin-plated
Pneumatic system	2 x 3/2-way slide valves (free from overlapping)
Operating pressure range [bar]	2...8
Operating pressure range [MPa]	0.2...0.8
Operating pressure range [psi]	29...116
Air flow at 6/5 bar [l/min]	500
Permissible compressed air	non-lubricated compressed air class 6-3-1; lubricated compressed air class 6-3-4
Manual override	pressing/releasing or pressing/turning/locking
Tube fittings	8 mm
Exhaust	exhaust can be discharged through tube connection

Displays / operating elements		
Display	operation	LED, green
	errors	LED, red
	function	LED, yellow

Accessories	
Accessories (supplied)	lower part
Accessories (optional)	Mounting plate, E74999
	Module lower part, E75000
	Protective cap: M12, E73004
	sealing plugs, E75231
	silencer, E75232
	Push-in L-fitting, E75228
	Push-in T-fitting, E75227

Remarks	
Remarks	If not pneumatically operated, E75231 sealing plug must be inserted.
	Avoid ingress of dirt and dust.
	Do not connect any of the following points to an external potential: L-, L+, I-1, I-2
	The connections are electrically connected with the AS-i cable. Notes on compressed air and EMC/ESD at <a href="http://www.ifm.com">www.ifm.com</a>
Pack quantity	1 pcs.

Electrical connection	
quick mounting technology for AS-i flat cable: ; three orientations possible	

Inputs	
1	voltage supply L+
2	not used
3	Sensor supply L-
4	data input
5	not used

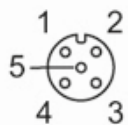
Connector: M12

# AC5227



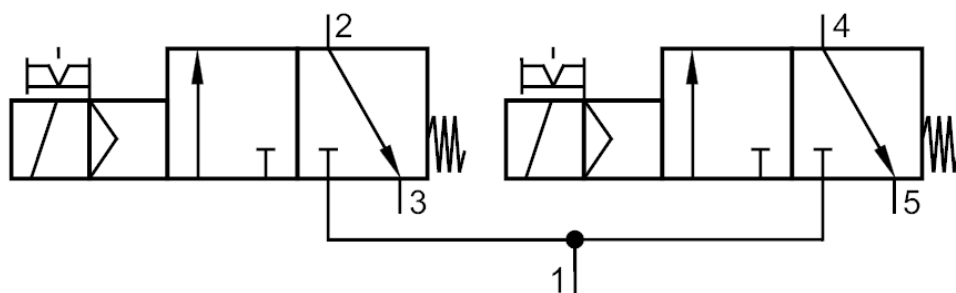
## AS-Interface Airbox with quick mounting technology

AirBox 2x3/2 2DI IP67



### Diagrams and graphs

Pneumatic symbol



2 x 3/2-way slide valves (free from overlapping)