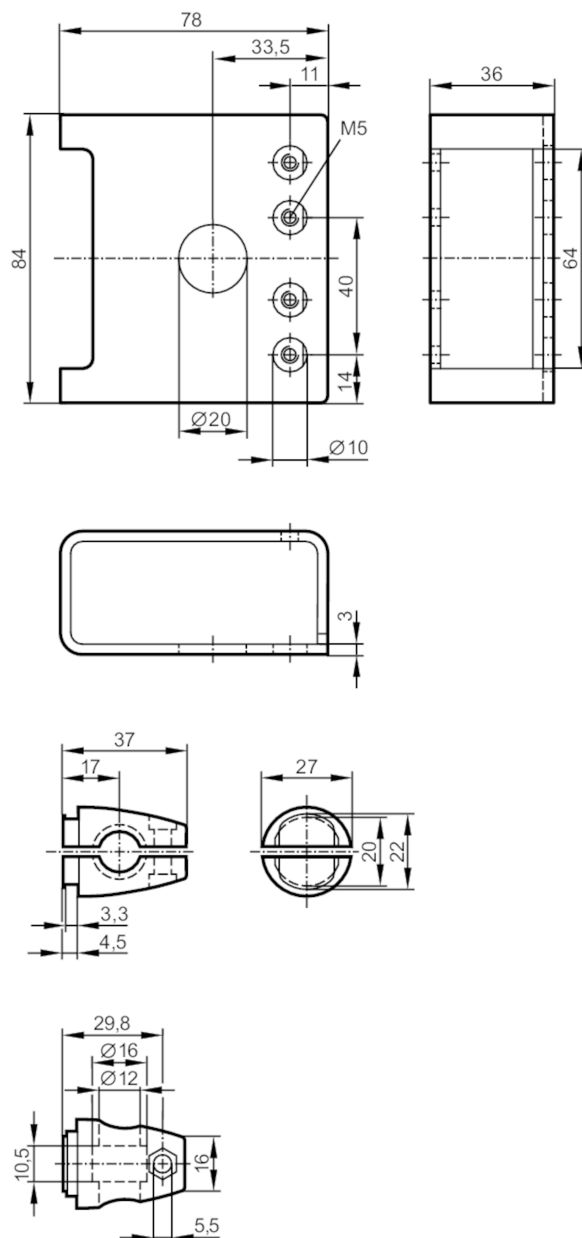


## Mounting set with protective cover for photoelectric sensors

O4 PROTECTIVE BRACKET 200



### Application

Design: clamp mounting, with protective cover

### Mechanical data

Weight [g]: 371.5

Type of mounting: Mounting rod; (Ø 12 mm)

Materials: stainless steel (316L/1.4404); Clamp: diecast zinc

### Accessories

Items supplied: head cap screw: 1 x M5 x 16  
cylinder screws: 2 x M5 x 30



# E21215



**Mounting set with protective cover for photoelectric sensors**

O4 PROTECTIVE BRACKET 200

**Remarks**

Pack quantity	1 pcs.
---------------	--------