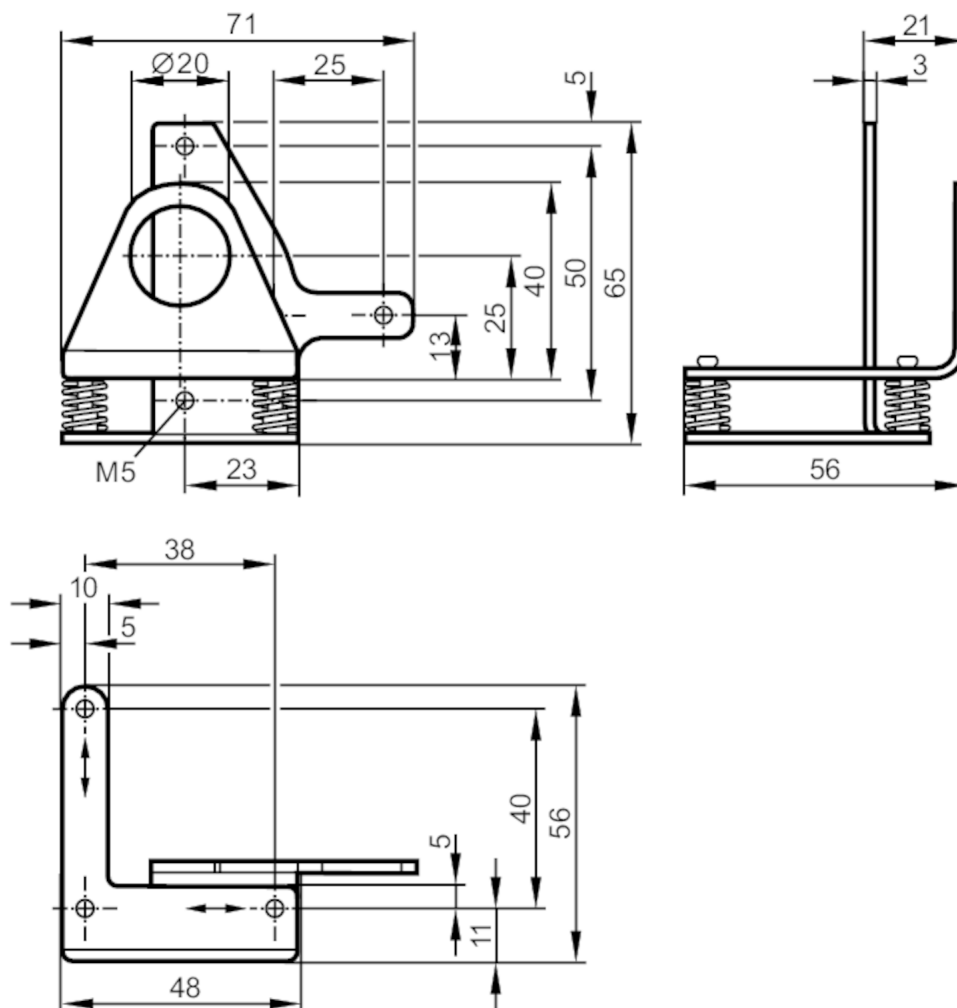


## Fixture for mounting and fine adjustment of laser sensors

FINE ADJUSTMENT LASER UNIT

Article no longer available - archive entry



### Application

Design: clamp mounting

### Mechanical data

Type of mounting: rod or free-standing depending on the clamp  
 Materials: stainless steel (316Ti/1.4571)  
 Alignment range: fine adjustment in 2 axes  $\pm 4^\circ$

### Accessories

Accessories (optional): Clamp:, for rod mounting, E20795  
 Clamp:, for free-standing mounting, E20796

### Remarks

Remarks: To fix O5 units M5 x 25 mm cylinder head bolts are needed.  
 To fix OL units M5 x 30 mm cylinder head bolts are needed.  
 Pack quantity: 1 pcs.