



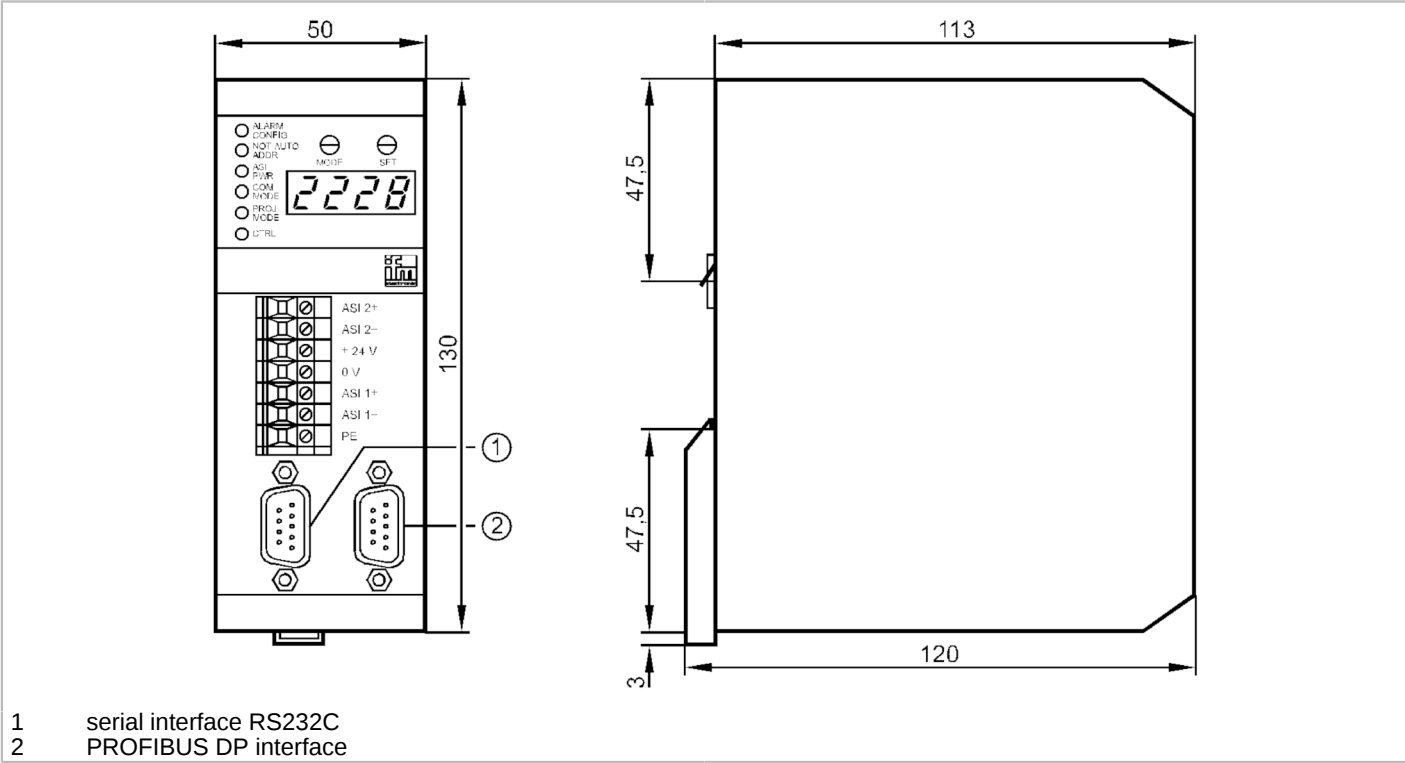
AS-Interface PROFIBUS DP gateway with PLC

Contr 2MSTR 1RS232C 1DP

Article no longer available - archive entry

Alternative articles: AC1028  
When selecting an alternative article and accessories please note that technical data may differ!

Replacement units for Krones systems should be obtained directly from the company Krones.  
This unit is not directly compatible.



Application	
Application	use as minicontroller and gateway
Electrical data	
Operating voltage [V]	22...30 DC; (24 DC ; to PELV)
Insulation rating [V]	500
Max. current consumption from AS-i [mA]	80
Max. power consumption [VA]	10
Electrical separation	yes
Outputs	
Electrical design	AS-i
Interfaces	
Communication interface	RS232
RS232	
Number of R232 interfaces	1
Transmission rate	4800...62400 Baud



## AS-Interface PROFIBUS DP gateway with PLC

Contr 2MSTR 1RS232C 1DP

Connector type	SUB-D	
Usage type	programming	
Operating conditions		
Ambient temperature	[°C]	0...60
Storage temperature	[°C]	-20...70
Max. relative air humidity	[%]	95
Protection	IP 20	
AS-i classification		
AS-i master profile	M1	
AS-i certificate	22501	
Mechanical data		
Housing	housing for DIN rail mounting	
Materials	aluminium	
Displays / operating elements		
Display	operation	2 x LED, red
		2 x LED, green
		2 x LED, yellow
Remarks		
Remarks	Replacement units for Krones systems should be obtained directly from the company Krones.	
	This unit is not directly compatible.	
Notes	Replacement units for Krones systems should be obtained directly from the company Krones.; This unit is not directly compatible.	
Pack quantity	1 pcs.	
Electrical connection		
screw terminals: 7 x		
Connection		

7	AS-i 2+
6	AS-i 2-
5	+ 24 V
4	0 V
3	AS-i 1+
2	AS-i 1-
1	PE