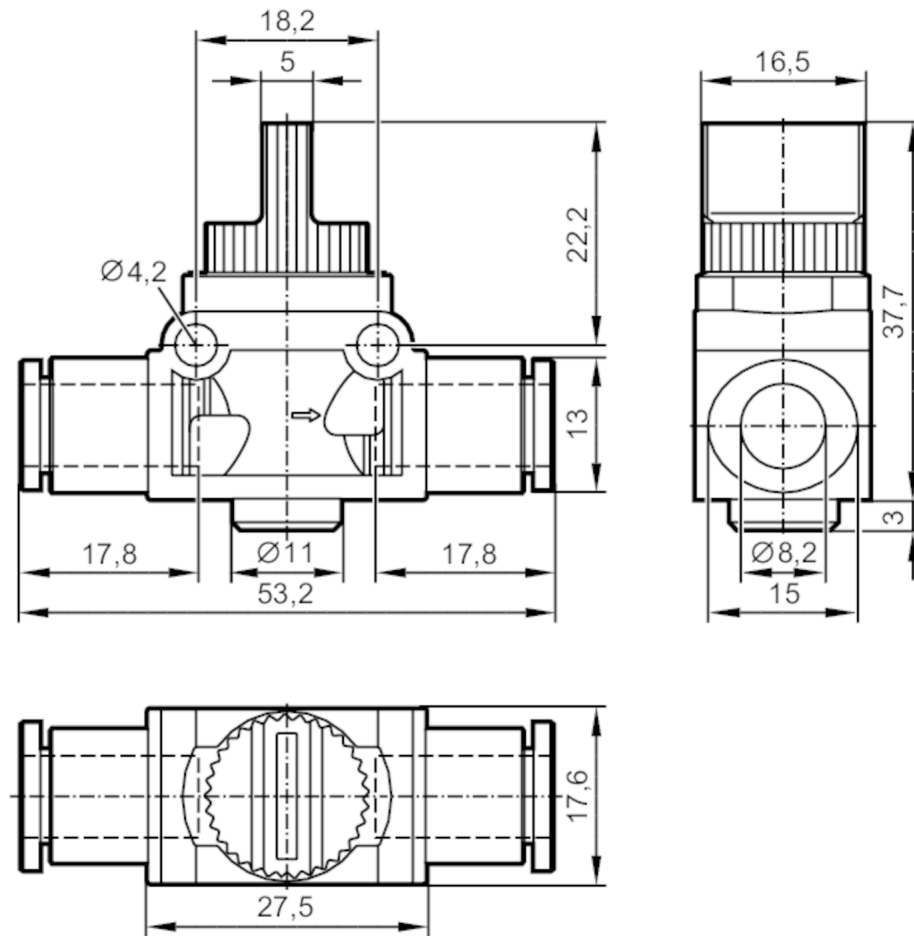




3/2-way shut-off valve

Shut-off valve



Application

Media compressed air according to ISO 8573-1: 2001

Operating conditions

Ambient temperature [°C] 0...60

Mechanical data

Weight [g] 23.3

Materials housing: PBT; release ring: polyoxymethylene;
Tooth lock washer: stainless steel; Sealing: NBR

Remarks

Remarks 3/2-way shut-off valves block the airflow and vent the secondary side.

Installation before the P connection [1] of the AirBox
to block the compressed air supply of the AirBox.

Pack quantity 1 pcs.