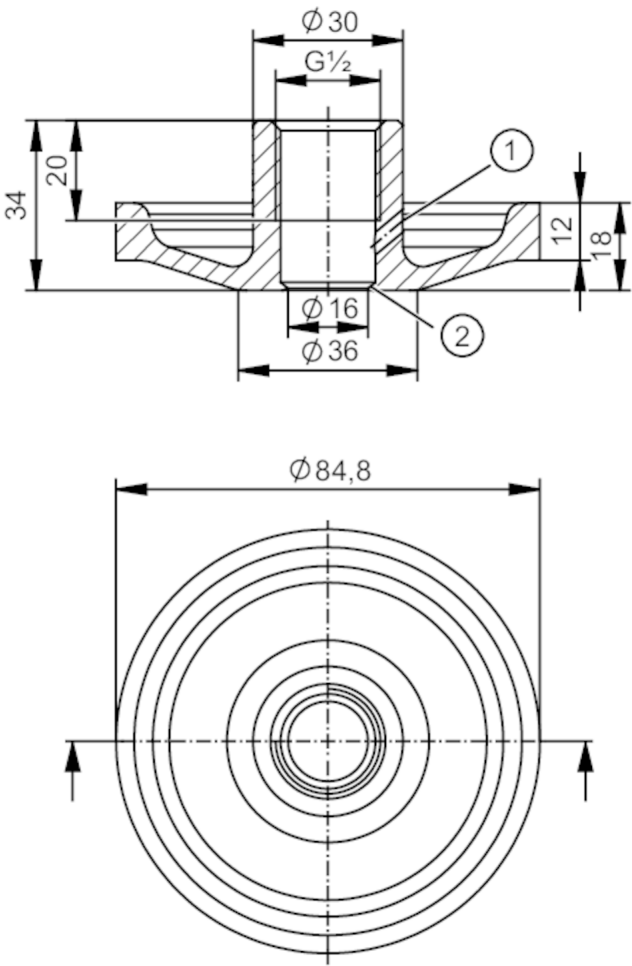




Welding adapter for process sensors

WELDING ADAPT G1/2 D85X34/11,5 V4A/3A



- 1 Leakage port
- 2 sealing edge



Application	
Design	with leakage port
Installation	for thick wall thicknesses and for unfavourable welding conditions
Pressure rating [bar]	50
Note on pressure rating	for the connection sensor - adapter
Tests / approvals	
Pressure Equipment Directive	A possible classification to PED depends on the application and has to be carried out by the user / operator.
Safety instructions	The compatibility between medium and product material has to be checked in all applications.
Mechanical data	
Weight [g]	379.29
Materials	stainless steel (316L/1.4435)
Sensor connection	G 1/2 sealing cone
Process connection	welding adapter Ø 84,8 mm
Surface characteristics Ra/Rz of the wetted parts	Ra <0.4 / Rz <4

E43920



Welding adapter for process sensors

WELDING ADAPT G1/2 D85X34/11,5 V4A/3A

Remarks	
Pack quantity	1 pcs.