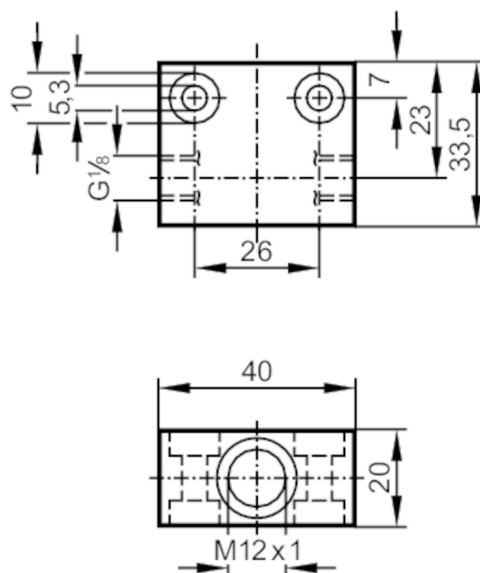


Process adapter for small volumetric flow quantities

FLOW ADAPT SI TI

Article no longer available - archive entry



Application

Design	for flow sensors and flow monitors \$mit_Adapter_singular
Installation	via internal G1/8A male thread, any mounting position
Medium temperature [°C]	0...80; (Temperature gradient: 1 K/min)
Pressure rating [bar]	30

Measuring/setting range

Flow range [ml/min]	2...100
---------------------	---------

Tests / approvals

Pressure Equipment Directive	A possible classification to PED depends on the application and has to be carried out by the user / operator.
Safety instructions	The compatibility between medium and product material has to be checked in all applications.

Mechanical data

Weight [g]	92.8
Dimensions [mm]	M12 x 1
Thread designation	M12 x 1
Materials	titanium (3.7235)

Remarks

Pack quantity	1 pcs.
---------------	--------