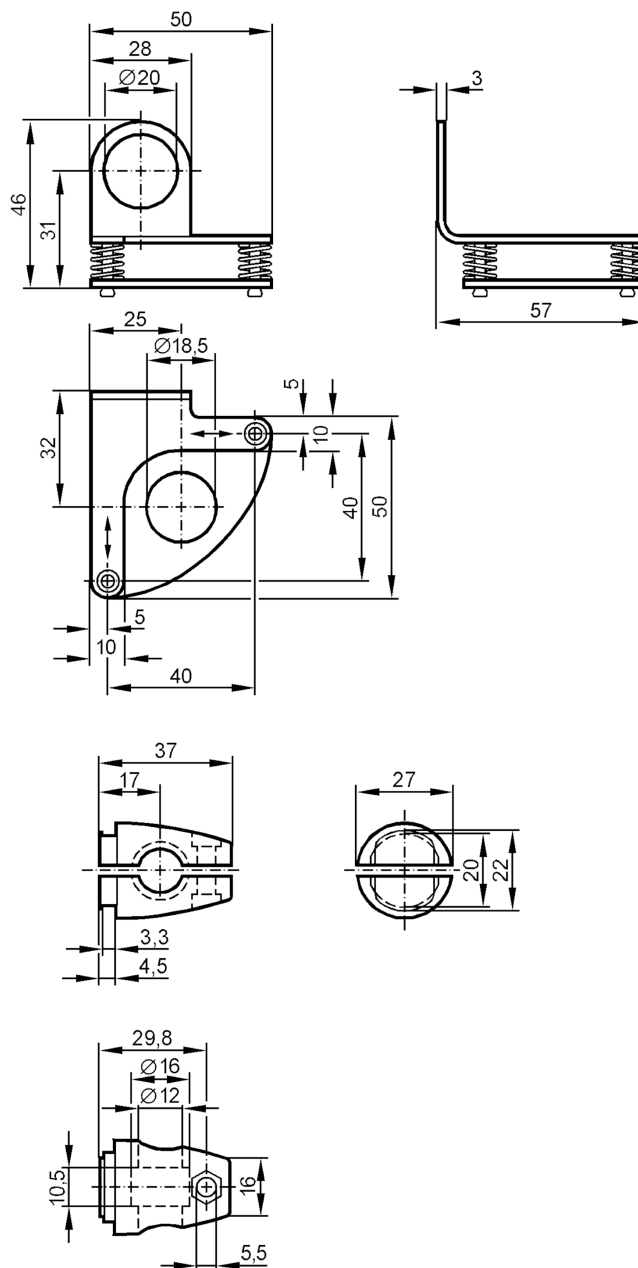


## Fixture for mounting and fine adjustment of laser sensors

MOUNTING SET OG/LASER



### Application

Design

clamp mounting

### Mechanical data

Weight

[g]

234.5

Type of mounting

Mounting rod; ( $\varnothing 12$  mm)

Materials

fixture: stainless steel (316Ti/1.4571); Clamp: diecast zinc

Alignment range

fine adjustment in 2 axes  $\pm 3^\circ$ 

### Accessories

Items supplied

head cap screw: 1 x M10 x 55

### Remarks

Pack quantity

1 pcs.