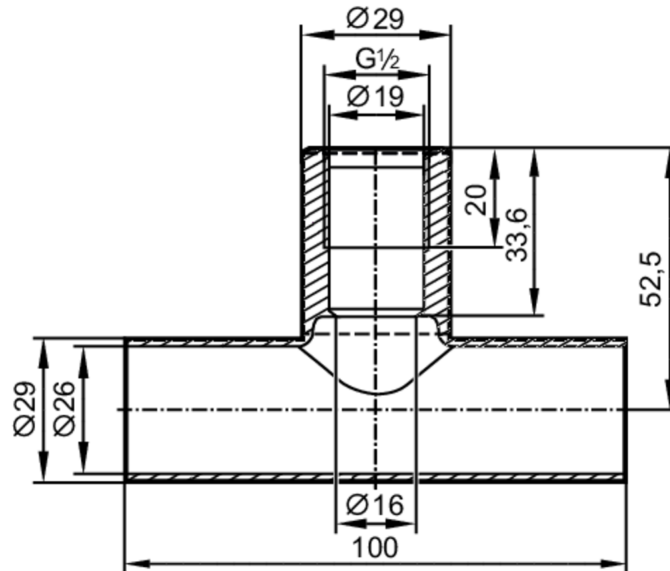




T-piece

T-PIPE/G1/2/L100/DN25



EC 1935/2004 EHEDG Tested FCM

Application	
Design	for sensors and adapters with process connection G 1/2 A
Pressure rating [bar]	40
Tests / approvals	
Pressure Equipment Directive	A possible classification to PED depends on the application and has to be carried out by the user / operator.
Safety instructions	The compatibility between medium and product material has to be checked in all applications.
Mechanical data	
Weight [g]	327
Materials	stainless steel (316L/1.4404)
Sensor connection	G 1/2 sealing cone
Process connection	welding adapter Ø 29 mm
Surface characteristics Ra/Rz of the wetted parts	0.8 / 4
Accessories	
Items supplied	O-ring: 1, FKM
Remarks	
Pack quantity	1 pcs.