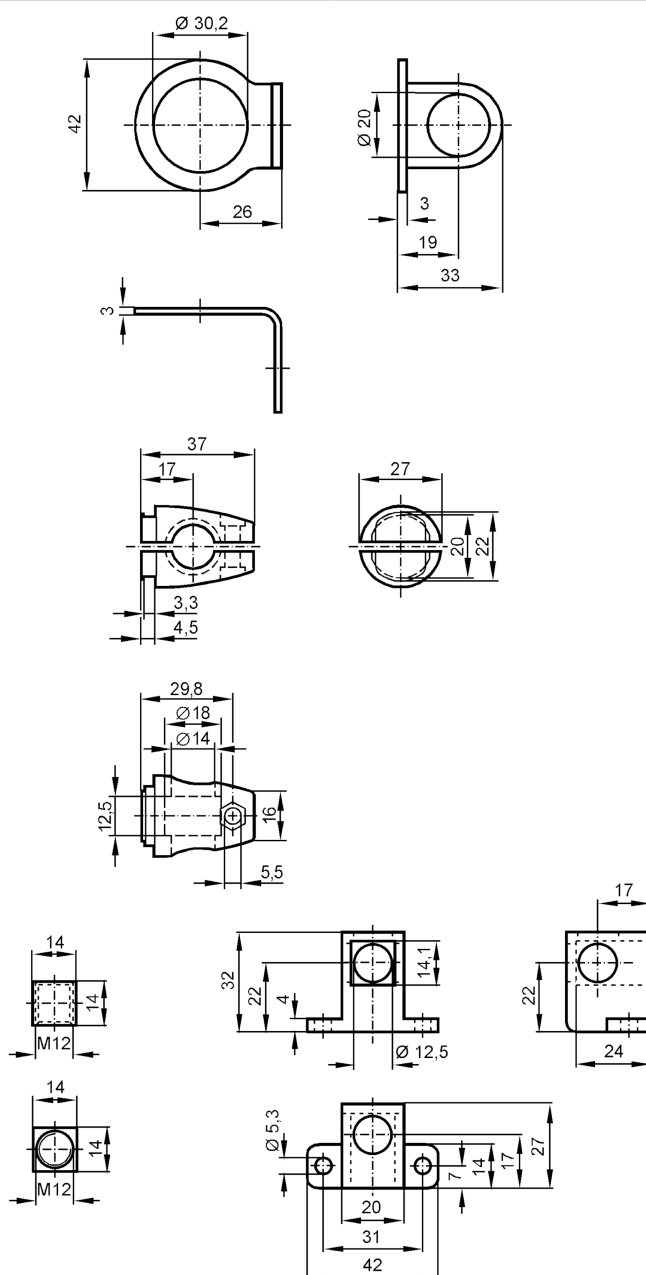




Mounting set for position sensors

SYSTEM COMPONENT M30 RAIL



Application

Design

clamp mounting

Mechanical data

Weight [g]

308.5

Type of mounting

aluminium profile

Dimensions [mm]

Ø 30.2

Materials

fixture: stainless steel (316Ti/1.4571); Clamp: diecast zinc; CUBE: diecast zinc

Accessories

Items supplied

screw: 1 x M12 x 55

Remarks

Pack quantity

1 pcs.