

ST1305



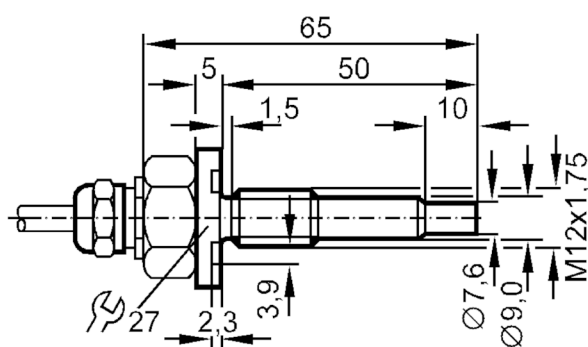
Flow sensor for connection to an evaluation unit

STM12ZBB/6m PUR Kabel, V4A

Article no longer available - archive entry

Alternative articles: ST1306

When selecting an alternative article and accessories please note that technical data may differ!



Product characteristics

Process connection	M12 x 1,75
--------------------	------------

Application

Application	high-temperature range
Media	Liquids; Gases
Pressure rating [bar]	30

Liquids

Application	high-temperature range
Medium temperature [°C]	0...120

Gases

Medium temperature [°C]	0...100
-------------------------	---------

Electrical data

Connection to control monitor	VS 0100
-------------------------------	---------

Measuring/setting range

Liquids

Setting range [cm/s]	3...300
Greatest sensitivity [cm/s]	3...60

Gases

Setting range [cm/s]	200...1500
Greatest sensitivity [cm/s]	200...800

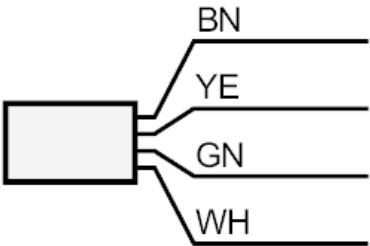
ST1305



Flow sensor for connection to an evaluation unit

STM12ZBB/6m PUR Kabel, V4A

Accuracy / deviations		
Temperature gradient	[K/min]	15
Response times		
Response time	[s]	1...10
Liquids		
Response time	[s]	1...10
Gases		
Response time	[s]	1...10
Operating conditions		
Protection		IP 67
Mechanical data		
Housing		threaded type
Dimensions	[mm]	M12 x 1.75
Thread designation		M12 x 1.75
Materials		stainless steel (1.4571/316Ti)
Process connection		M12 x 1,75
Remarks		
Pack quantity		1 pcs.
Electrical connection		
Cable: 6 m, PUR; Maximum cable length: 100 m; 4 x 0.25 mm ²		
Connection		



	Core colours :
BN =	brown
GN =	green
WH =	white
YE =	yellow