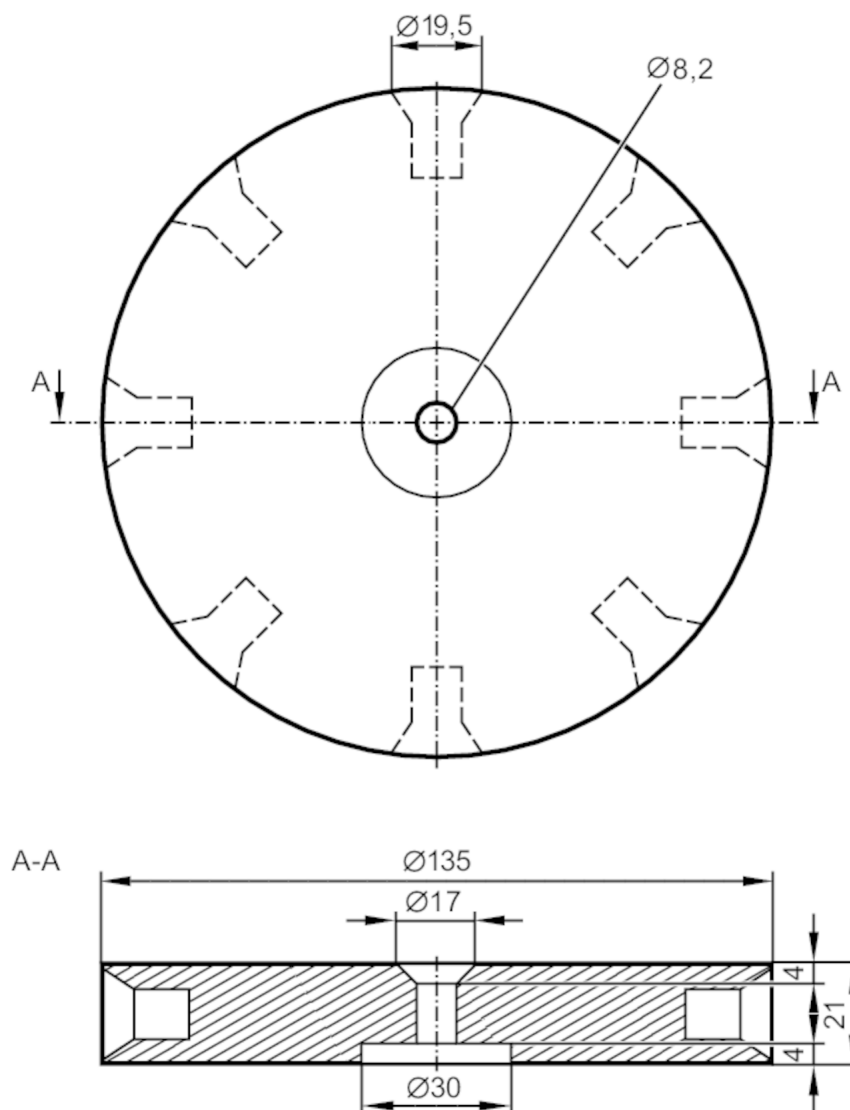


E89010



Cam wheel

TARGET WHEEL/8,2mm



Product characteristics

Dimensions [mm] 135 x 135 x 21

Application

Application for detection of very low rotational speeds and conversion to a higher pulse number per minute; with even mark-to-space ratio ; e.g. for the use of a frequency-to-current converter

Mechanical data

Weight [g] 490

Dimensions [mm] 135 x 135 x 21

Materials disc: Delrin; screws: CK 45

Remarks

Remarks The socket head screws can be removed to reduce the number of cams.