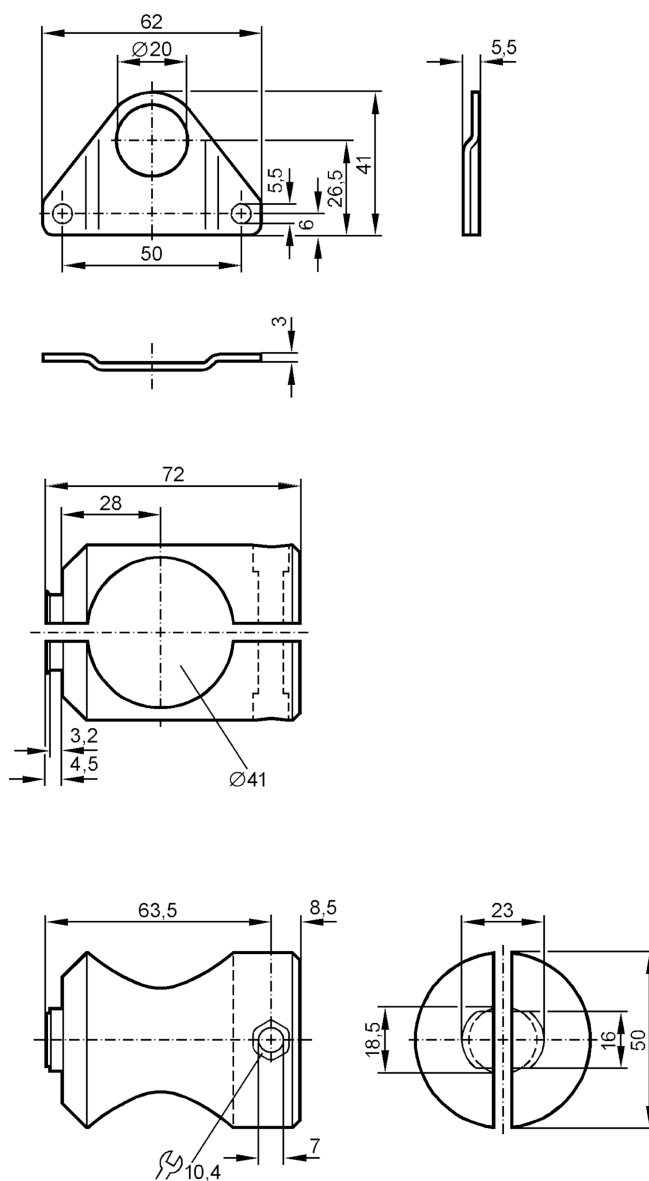


Mounting set for photoelectric sensors

MOUNTING SET FOR OL ROD



Application

Design

clamp mounting

Mechanical data

Weight

[g]

257

Type of mounting

Mounting rod; (Ø 40 mm)

Materials

fixture: stainless steel (316Ti/1.4571); Clamp: aluminium uncoloured anodised

Remarks

Pack quantity

1 pcs.