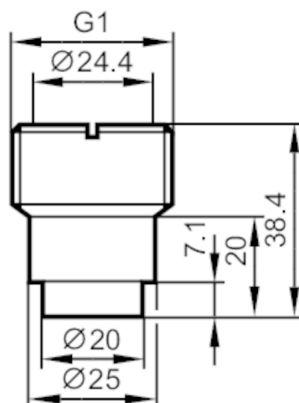




## Mounting adapter for compressed air meter

ADTR, SD, WELD, 0.280" SHLDR



### Application

Design	for compressed air meters SD
Installation	for pipe sizes; (2.5" sch 80 / 80S, 5" - 6" sch 40 / 40S)

### Mechanical data

Weight	[g]	113.398
Type of mounting	for pipe sizes; (2.5" sch 80 / 80S, 5" - 6" sch 40 / 40S)	
Materials	stainless steel (316L/1.4404)	

### Remarks

Pack quantity	1 pcs.
---------------	--------