



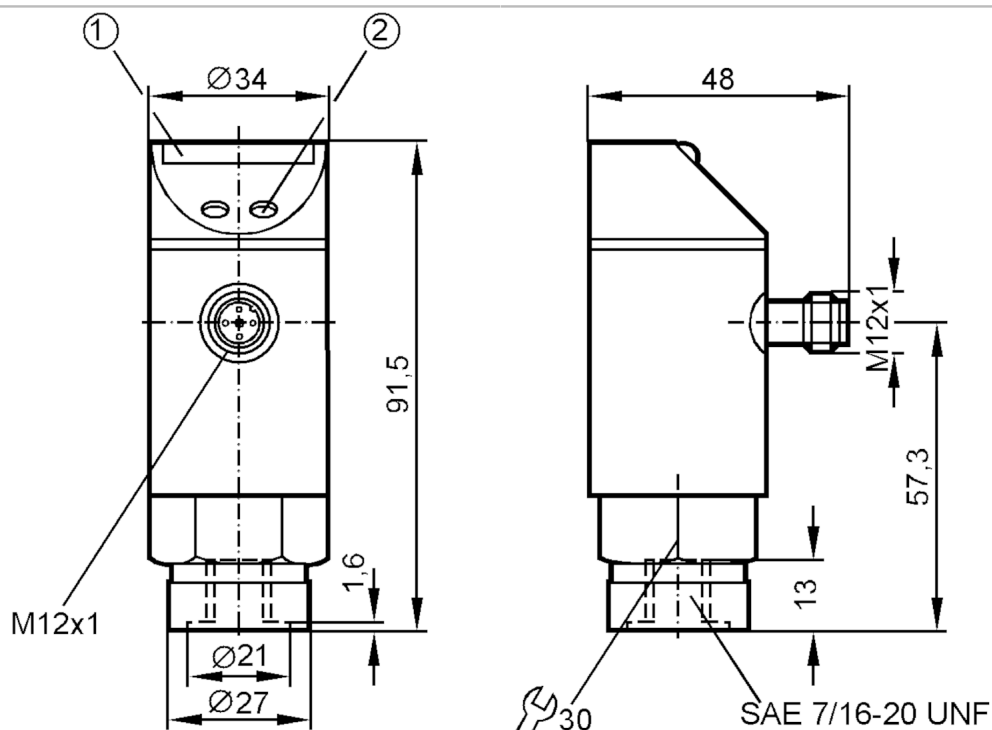
Pressure sensor with LED bar display

PB-500PSBU76-HFPKG/US/ IV

Article no longer available - archive entry

Alternative articles: PN7300

When selecting an alternative article and accessories please note that technical data may differ!



- 1 LED bar display
2 programming button



Product characteristics

| | |
|------------------------------|--|
| Number of inputs and outputs | Number of digital outputs: 1 |
| Measuring range [psi] | 0...5000 |
| Process connection | threaded connection 7/16" - 20 UNF internal thread |

Application

| | |
|------------------------------|--|
| Special feature | Gold-plated contacts |
| Application | for industrial applications |
| Media | liquids and gases |
| Conditionally suitable for | For gaseous media the application is limited to max. 25 bar. |
| Medium temperature [°C] | -25...80 |
| Min. bursting pressure [psi] | 14000 |
| Pressure rating [psi] | 8500 |
| Type of pressure | relative pressure |

Electrical data

| | |
|---------------------------------|-----------------|
| Operating voltage [V] | 18...30 DC |
| Current consumption [mA] | < 50 |
| Min. insulation resistance [MΩ] | 100; (500 V DC) |
| Protection class | III |



Pressure sensor with LED bar display

PB-500PSBU76-HFPKG/US/ IV

| | |
|-----------------------------|-----|
| Reverse polarity protection | yes |
| Power-on delay time [s] | 0.2 |
| Integrated watchdog | yes |

Inputs / outputs

| | |
|------------------------------|------------------------------|
| Number of inputs and outputs | Number of digital outputs: 1 |
|------------------------------|------------------------------|

Outputs

| | |
|--|--|
| Total number of outputs | 1 |
| Output signal | switching signal |
| Electrical design | PNP |
| Number of digital outputs | 1 |
| Output function | normally open / normally closed; (parameterisable) |
| Max. voltage drop switching output DC [V] | 2 |
| Permanent current rating of switching output DC [mA] | 250 |
| Switching frequency DC [Hz] | 10 |
| Short-circuit protection | yes |
| Type of short-circuit protection | pulsed |
| Overload protection | yes |

Measuring/setting range

| | |
|-----------------------|------------|
| Measuring range [psi] | 0...5000 |
| Set point SP [psi] | 250...5000 |
| Reset point rP [psi] | 150...4900 |
| In steps of [psi] | 50 |
| Note on hysteresis | adjustable |

Accuracy / deviations

| | |
|--|---|
| Switch point accuracy [% of the final value] | $< \pm 2,0$ |
| Repeatability [% of the final value] | $< \pm 0,25$; (with temperature fluctuations < 10 K) |
| Temperature drift per 10 K | $< \pm 0.3$ |

Software / programming

| | |
|--------------------------------|--------------------|
| Adjustment of the switch point | programming button |
|--------------------------------|--------------------|

Operating conditions

| | |
|--------------------------|-----------|
| Ambient temperature [°C] | -25...80 |
| Storage temperature [°C] | -40...100 |
| Protection | IP 67 |

Tests / approvals

| | | |
|----------------------|---------------------------|---------------------|
| EMC | EN 61000-4-2 ESD | 4 kV CD / 8 kV AD |
| | EN 61000-4-3 HF radiated | 10 V/m |
| | EN 61000-4-4 Burst | 2 kV |
| | EN 61000-4-6 HF conducted | 10 V |
| Shock resistance | DIN IEC 68-2-27 | 50 g (11 ms) |
| Vibration resistance | DIN IEC 68-2-6 | 20 g (10...2000 Hz) |

PB5320



Pressure sensor with LED bar display

PB-500PSBU76-HFPKG/US/ IV

| Mechanical data | | |
|--------------------------|---|--|
| Materials | EPDM/X; FKM; NBR; PA; PBT; PC; PTFE; stainless steel (1.4301 / 304) | |
| Materials (wetted parts) | FKM; ceramics; stainless steel (1.4305 / 303) | |
| Min. pressure cycles | 100 million | |
| Process connection | threaded connection 7/16" - 20 UNF internal thread | |

| Displays / operating elements | | |
|-------------------------------|------------------|---|
| Display | switching status | LED, yellow |
| | measured values | 10 x LED, green Resolution 10% of the final value |

| Remarks | | |
|---------------|--------|--|
| Pack quantity | 1 pcs. | |

Electrical connection

Connector: 1 x M12; coding: A; Contacts: gold-plated

