

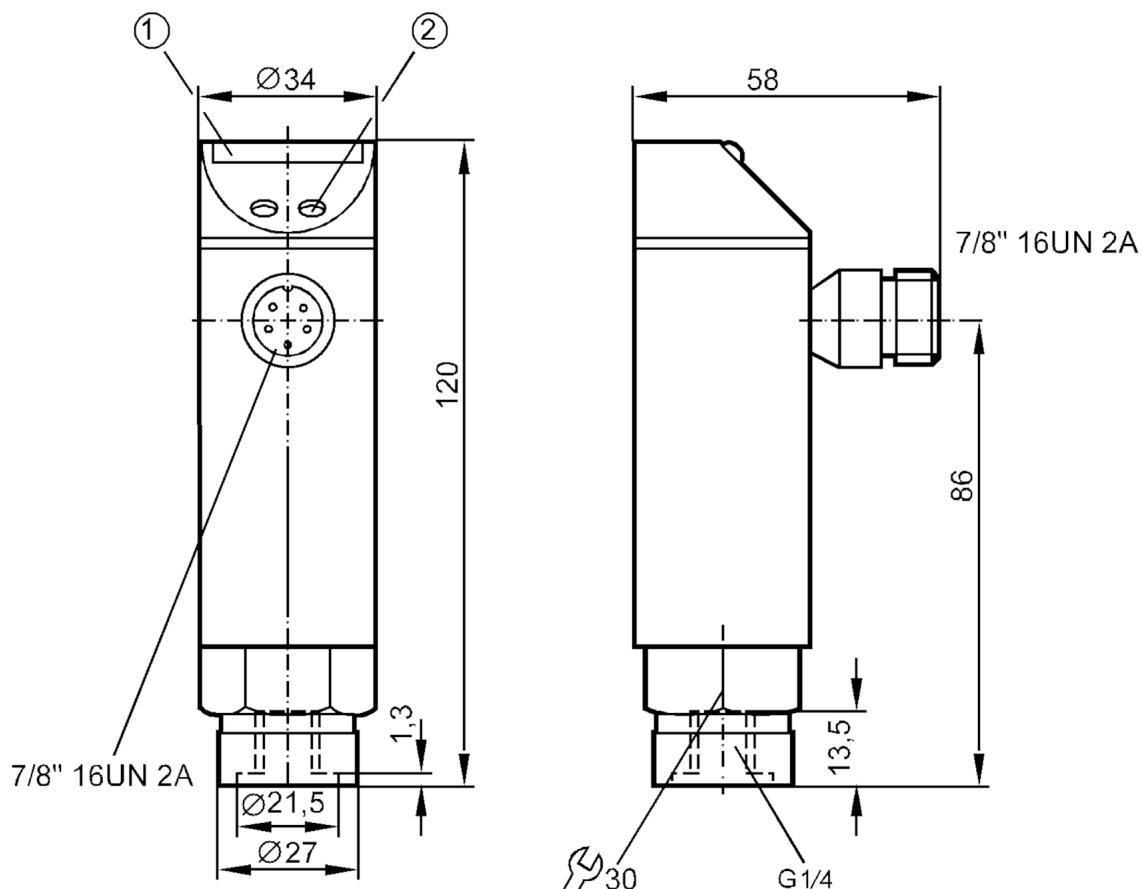
Pressure sensor with LED bar display

PB-025-SBR14-HFBOW/LS/ IV

Article no longer available - archive entry

Alternative articles: PN4223 + E30058

When selecting an alternative article and accessories please note that technical data may differ!



- 1 LED bar display
2 programming button



Product characteristics

Number of inputs and outputs	Number of digital outputs: 1
Measuring range [bar]	0...25
Process connection	threaded connection G 1/4 internal thread

Application

Application	for industrial applications
Media	liquids and gases
Medium temperature [°C]	-25...70
Min. bursting pressure [bar]	350
Pressure rating [bar]	100
Type of pressure	relative pressure

Electrical data

Operating voltage [V]	102...132 AC
-----------------------	--------------



Pressure sensor with LED bar display

PB-025-SBR14-HFBOW/LS/ /V

Current consumption	[mA]	20
Power-on delay time	[s]	0.35
Integrated watchdog		yes

Inputs / outputs

Number of inputs and outputs	Number of digital outputs: 1
------------------------------	------------------------------

Outputs

Total number of outputs	1
Output signal	switching signal
Number of digital outputs	1
Output function	normally open
Max. voltage drop switching output AC	[V] 2
Permanent current rating of switching output AC	[mA] 250; (...70 °C) 1000 (...60 °C) 1500 (...45 °C) 2500 (...20 °C))
Short-circuit protection	no
Overload protection	no

Measuring/setting range

Measuring range	[bar]	0...25
Set point SP	[bar]	1.25...25
Reset point rP	[bar]	0.75...24.5
In steps of	[bar]	0.25
Note on hysteresis		adjustable

Accuracy / deviations

Switch point accuracy	[% of the final value]	< ± 2,0
Repeatability	[% of the final value]	< ± 0,25; (with temperature fluctuations < 10 K)
Temperature drift per 10 K		< ± 0.3

Software / programming

Adjustment of the switch point	programming button
--------------------------------	--------------------

Operating conditions

Ambient temperature	[°C]	-25...70
Storage temperature	[°C]	-40...100
Protection		IP 65

Tests / approvals

EMC	IEC 801/2 ESD	4 kV CD / 8 kV AD
	IEC 801/3 HF	10 V/m
	IEC 801/4 Burst	2 kV
Shock resistance	DIN IEC 68-2-27	50 g (11 ms)
Vibration resistance	DIN IEC 68-2-6	20 g (10...2000 Hz)

Mechanical data

Materials	EPDM/X; FKM; NBR; PBT; PC; stainless steel (304/1.4301)
Materials (wetted parts)	FKM; ceramics; stainless steel (303/1.4305)
Min. pressure cycles	100 million

PB4013



Pressure sensor with LED bar display

PB-025-SBR14-HFBOW/LS/ /V

Process connection	threaded connection G 1/4 internal thread
Restrictor element integrated	no (can be retrofitted)

Displays / operating elements

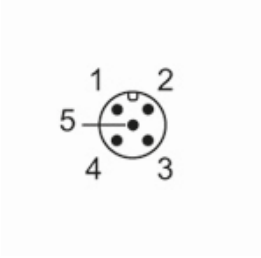
Display	switching status	LED, yellow
	measured values	10 x LED, green Resolution 10% of the final value

Remarks

Pack quantity	1 pcs.
---------------	--------

Electrical connection

Connector: 1 x 7/8"; coding: A



Connection

