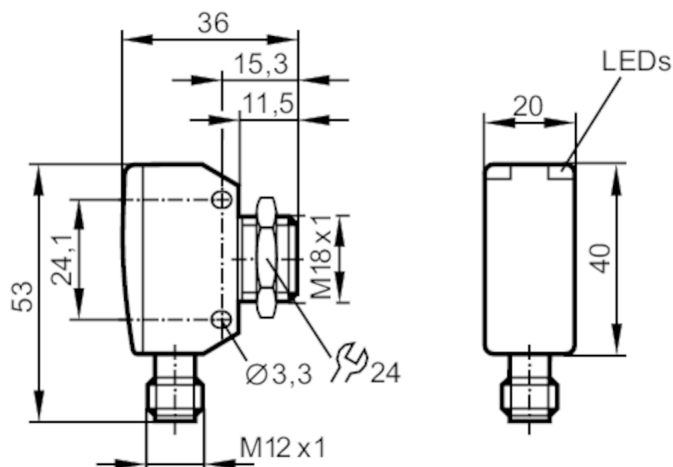


## Through-beam sensor transmitter

OGS-00KG/US/V4A/CUBE



transmitter in lower lens  
receiver in upper lens



### Product characteristics

Type of light	red light
Housing	rectangular with M18 thread

### Application

Function principle	Through-beam sensor
--------------------	---------------------

### Electrical data

Operating voltage	[V]	10...30 DC
Current consumption	[mA]	20
Protection class		III
Reverse polarity protection		yes
Type of light		red light
Wave length	[nm]	624

### Detection zone

Transmitter / receiver		transmitter
Range	[m]	< 15
Range adjustable		no
Max. light spot diameter	[mm]	800
Light spot dimensions refer to		at maximum range

### Operating conditions

Ambient temperature	[°C]	-25...80
Protection		IP 65; IP 67; IP 68; IP 69K

### Tests / approvals

EMC	EN 60947-5-2	
MTTF	[years]	1011

### Mechanical data

Weight	[g]	78
--------	-----	----



## Through-beam sensor transmitter

OGS-00KG/US/IV4A/CUBE

Housing	rectangular with M18 thread
Dimensions [mm]	53 x 20 x 36
Thread designation	M18 x 1
Materials	stainless steel (630/1.4542/17-4 PH); PEI
Lens material	PEI
Lens alignment	side lens

## Displays / operating elements

Display	operation	1 x LED, green
---------	-----------	----------------

## Accessories

Items supplied	lock nut: 1, stainless steel
----------------	------------------------------

## Remarks

Remarks	operating voltage "supply class 2" according to cULus
Pack quantity	1 pcs.

## Electrical connection

Connector: 1 x M12; coding: A



## Connection

