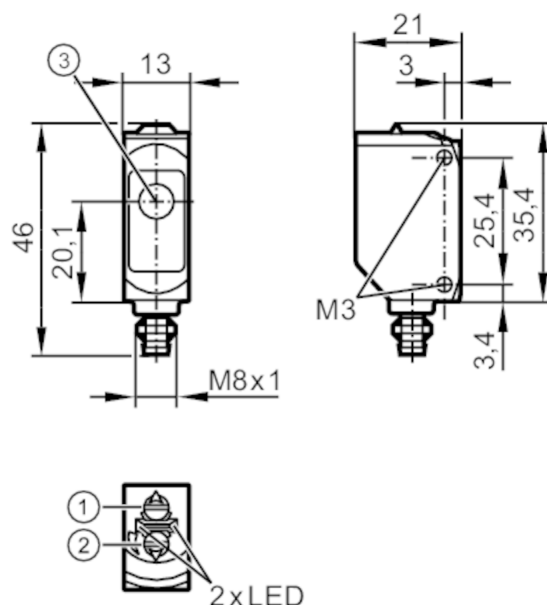


Through-beam sensor receiver

O6E-CPKG/AS/4P



- 1: output function switch
 2: potentiometer sensitivity
 3: Light incidence



Product characteristics

Type of light	red light
Housing	rectangular

Application

Function principle	Through-beam sensor
--------------------	---------------------

Electrical data

Operating voltage	[V]	10...30 DC
Current consumption	[mA]	7; ((24 V))
Protection class		III
Reverse polarity protection		yes
Reverse polarity protection		yes
Type of light		red light
Wave length	[nm]	633

Outputs

Electrical design		PNP
Output function		complementary
Max. voltage drop switching output DC	[V]	0.5
Minimum load current	[mA]	5
Max. leakage current	[mA]	0.1
Permanent current rating of switching output DC	[mA]	100
Switching frequency DC	[Hz]	1000



Through-beam sensor receiver

O6E-CPKG/AS/4P

Short-circuit protection	yes
Type of short-circuit protection	pulsed

Detection zone

Transmitter / receiver	receiver
Range [m]	< 10
Range adjustable	yes

Operating conditions

Ambient temperature [°C]	-10...60
Protection	IP 65; IP 67

Tests / approvals

EMC	EN 60947-5-2	
MTTF [years]	1273	
UL approval	UL Approval no.	E009

Mechanical data

Weight [g]	15.7
Housing	rectangular
Dimensions [mm]	46 x 13 x 21
Materials	housing: ABS; PPSU
Lens material	PMMA
Lens alignment	side lens
Sealing material	EPDM
Tightening torque [Nm]	0.5; (screws)

Displays / operating elements

Display	switching status	1 x LED, yellow
	operation	1 x LED, green

Remarks

Remarks	operating voltage "supply class 2" according to cULus
Pack quantity	1 pcs.

Electrical connection

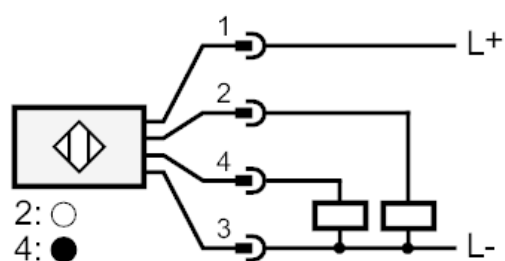
Connector: 1 x M8; coding: A; Locking: metal, coated; Sealing: EPDM



Through-beam sensor receiver

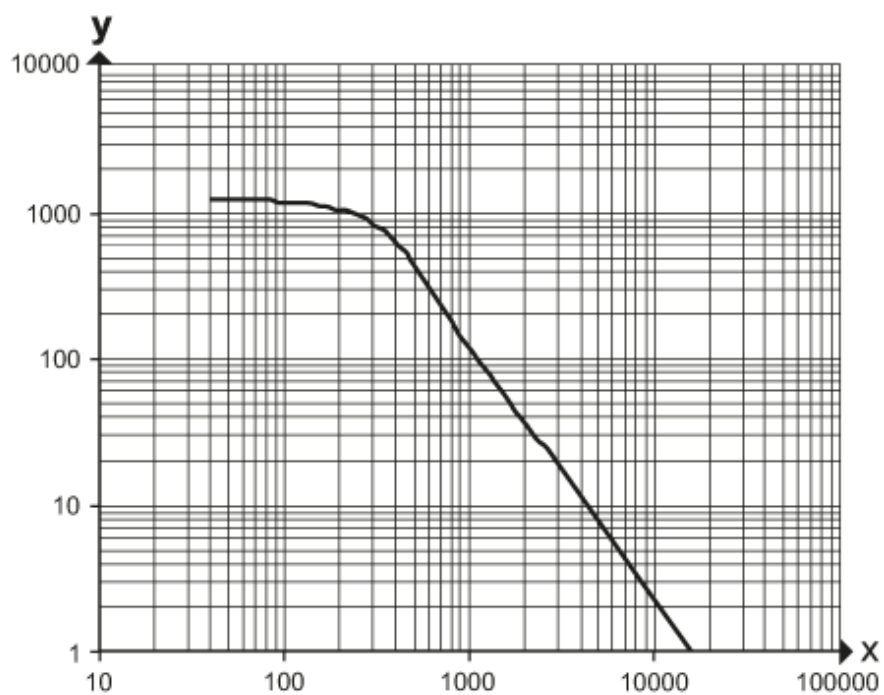
O6E-CPKG/AS/4P

Connection



Diagrams and graphs

excess gain graph



x: distance [mm]

y: excess gain factor