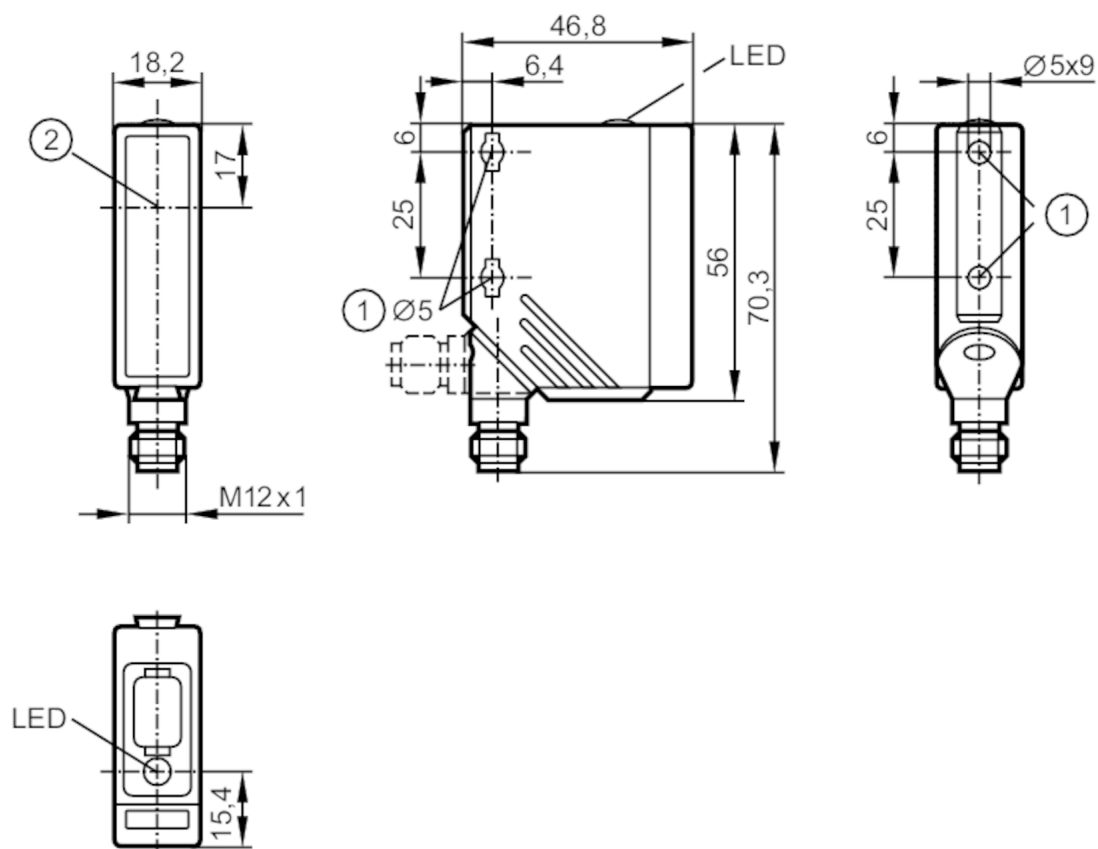


# O5S200



## Through-beam sensor transmitter

O5S-00KG/US100



- 1 When a M5 mounting screw is used, the max. tightening torque is 2 Nm.  
2 light emission



## Product characteristics

|               |             |
|---------------|-------------|
| Type of light | red light   |
| Housing       | rectangular |

## Application

|                    |                     |
|--------------------|---------------------|
| Function principle | Through-beam sensor |
|--------------------|---------------------|

## Electrical data

|                             |      |            |
|-----------------------------|------|------------|
| Operating voltage           | [V]  | 10...36 DC |
| Current consumption         | [mA] | 20         |
| Protection class            |      | II         |
| Reverse polarity protection |      | yes        |
| Type of light               |      | red light  |
| Wave length                 | [nm] | 624        |

## Detection zone

|                                |                  |
|--------------------------------|------------------|
| Transmitter / receiver         | transmitter      |
| Range [m]                      | < 20             |
| Range adjustable               | no               |
| Max. light spot diameter [mm]  | 500              |
| Light spot dimensions refer to | at maximum range |

# O5S200



## Through-beam sensor transmitter

O5S-00KG/US100

### Operating conditions

|                     |      |          |
|---------------------|------|----------|
| Ambient temperature | [°C] | -25...60 |
| Protection          |      | IP 67    |

### Tests / approvals

|      |         |              |
|------|---------|--------------|
| EMC  |         | EN 60947-5-2 |
| MTTF | [years] | 760          |

### Mechanical data

|                |      |  |
|----------------|------|--|
| Weight         | [g]  | 60.5   |
| Housing        |      | rectangular  |
| Dimensions     | [mm] | 56 x 18.2 x 46.8   |
| Materials      |      | housing: PA; bezel: stainless steel; operator interface: TPE |
| Lens material  |      | PMMA   |
| Lens alignment |      | side lens  |

### Displays / operating elements

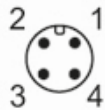
|         |           |                |
|---------|-----------|----------------|
| Display | operation | 1 x LED, green |
|---------|-----------|----------------|

### Remarks

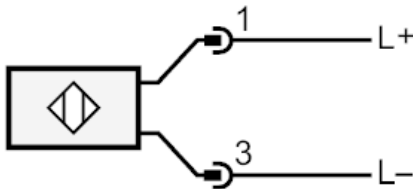
|               |  |   |
|---------------|--|---|
| Remarks       |  | operating voltage "supply class 2" according to cULus |
| Pack quantity |  | 1 pcs.  |

### Electrical connection

Connector: 1 x M12; coding: A



### Connection





## Through-beam sensor transmitter

O5S-OOKG/US100

### Diagrams and graphs

excess gain graph

