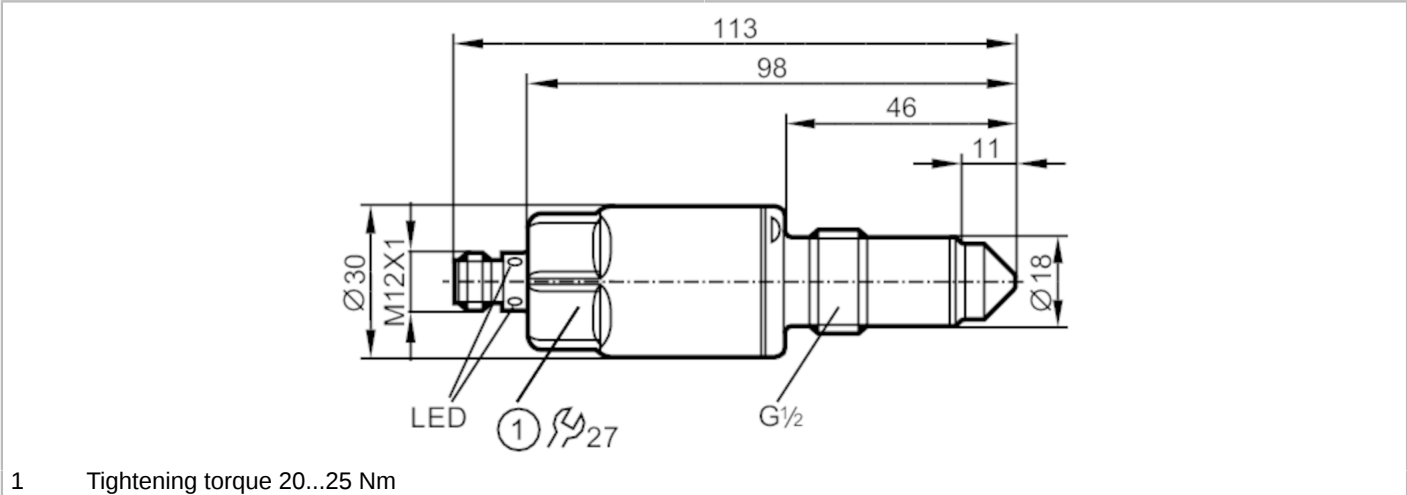


LMT191



Level sensor for limit detection with overspill protection (German Federal Water Act)

LMACE-A12E-QPKG-2/US



CE cUL US LISTED IO-Link KTW/W270 UK CA WHG

Product characteristics		
Number of inputs and outputs		Number of digital outputs: 2
Factory setting		hydrous media
Process connection		threaded connection G 1/2 sealing cone
Application		
Special feature		Gold-plated contacts
Media		Liquids
Recommended media		water; hydrous media; oils; oil-based media
Cannot be used for		See the operating instructions, chapter "Function and features".
Probe length	[mm]	11
Tank pressure	[bar]	-1...40; (applications subject to the German Federal Water Act : -0,5...10 bar)
Oil		
Medium temperature	[°C]	-40...100; (applications subject to the German Federal Water Act 0...100 °C)
Medium temperature short time	[°C]	-40...150; (1 h; applications subject to the German Federal Water Act : 0...100 °C)
Water		
Medium temperature	[°C]	-40...85; (applications subject to the German Federal Water Act : 0...85 °C)
Medium temperature short time	[°C]	-40...150; (1 h; applications subject to the German Federal Water Act : 0...100 °C)
Electrical data		
Operating voltage	[V]	18...30 DC
Current consumption	[mA]	< 50
Protection class		III
Reverse polarity protection		yes
Measuring principle		capacitive
Inputs / outputs		
Number of inputs and outputs		Number of digital outputs: 2
Outputs		
Total number of outputs		2



Level sensor for limit detection with overspill protection (German Federal Water Act)

LMACE-A12E-QPKG-2/US

Output signal	switching signal; IO-Link
Electrical design	PNP
Number of digital outputs	2
Max. voltage drop switching output DC [V]	2.5
Permanent current rating of switching output DC [mA]	100
Short-circuit protection	yes
Type of short-circuit protection	pulsed
Overload protection	yes

Measuring/setting range

Factory setting	hydrous media
-----------------	---------------

Response times

Response time [s]	< 0.5
-------------------	-------

Interfaces

Communication interface	IO-Link				
Transmission type	COM2 (38,4 kBaud)				
IO-Link revision	1.1				
SDCI standard	IEC 61131-9				
Profiles	Smart Sensor: Process Data Variable; Device Identification				
SIO mode	yes				
Required master port type	A				
Process data analogue	1				
Process data binary	2				
Min. process cycle time [ms]	2.3				
Supported DeviceIDs	<table> <tr> <th>Type of operation</th><th>DeviceID</th></tr> <tr> <td>default</td><td>449</td></tr> </table>	Type of operation	DeviceID	default	449
Type of operation	DeviceID				
default	449				

Operating conditions

Ambient temperature [°C]	-40...85
Note on ambient temperature	Medium temperature 100...150 °C
	-40...60 °C
Storage temperature [°C]	-40...85
Protection	IP 68; IP 69K

Tests / approvals

Approval	WHG; General building authority approval; overflow prevention	
EMC	DIN EN 61000-6-2	
	DIN EN 61000-6-4	open tanks
	DIN EN 61000-6-3	closed tanks
Shock resistance	DIN EN 60068-2-27	50 g (11 ms)
Vibration resistance	DIN EN 60068-2-6	20 g (10...2000 Hz)
MTTF [years]	223.21	
UL approval	UL Approval no.	H001

Mechanical data

Weight [g]	217
------------	-----

LMT191



Level sensor for limit detection with overspill protection (German Federal Water Act)

LMACE-A12E-QPKG-2/US	
Materials	stainless steel (316L/1.4404); PEEK; PEI; FKM
Materials (wetted parts)	PEEK; surface characteristics: Ra < 0,8 / Rz 4
Process connection	threaded connection G 1/2 sealing cone

Displays / operating elements

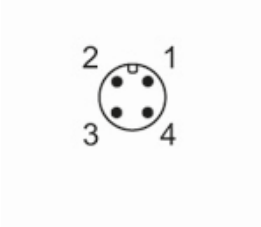
Display	switching status	LED, yellow
	operating status	LED, green

Remarks

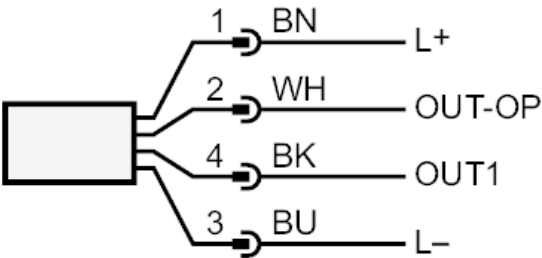
Pack quantity	1 pcs.
---------------	--------

Electrical connection

Connector: 1 x M12; coding: A; Contacts: gold-plated



Connection



OUT1:	switching output
OUT-OP	switching output overflow prevention to the German Federal Water Act (WHG)
	colours to DIN EN 60947-5-2
	Core colours :
BK =	black
BN =	brown
BU =	blue
WH =	white