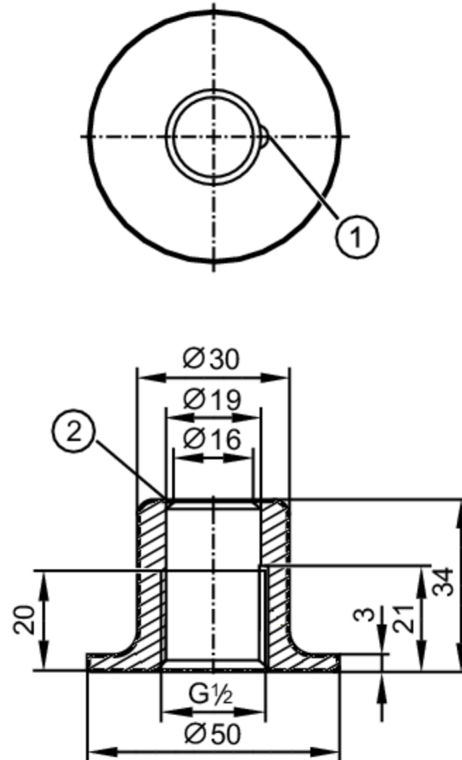


## Welding adapter for process sensors

ADAPT G1/2 WELDING POT



- 1 Leakage port  
2 sealing edge



EC 1935/2004 EHEDG Certified FCM FDA

## Application

Design	long design for deeper installation
Pressure rating [bar]	50
Note on pressure rating	for the connection sensor - adapter

## Tests / approvals

Pressure Equipment Directive	A possible classification to PED depends on the application and has to be carried out by the user / operator.
Safety instructions	The compatibility between medium and product material has to be checked in all applications.

## Mechanical data

Weight [g]	200
Materials	stainless steel (316L/1.4435)
Sensor connection	G 1/2 sealing cone
Process connection	welding adapter Ø 50 mm
Surface characteristics Ra/Rz of the wetted parts	0.4 / 4

## Remarks

Pack quantity	1 pcs.
---------------	--------