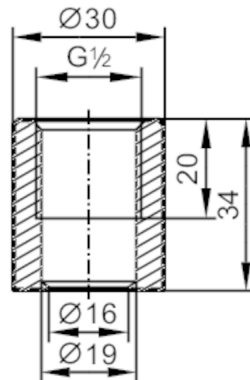


E43300



Welding adapter for process sensors

ADAPT G1/2-WELDING SLEEVE



CRN EC 1935/2004 EHEDG Certified **FCM** 

Application

| | | |
|--|-------|-------------------------------------|
| Design | | for tanks |
| Pressure rating | [bar] | 50 |
| Note on pressure rating | | for the connection sensor - adapter |
| MAWP (for applications according to CRN) | [bar] | 75 |

Mechanical data

| | | |
|---|-----|---------------------------------|
| Weight | [g] | 168.5 |
| Materials | | stainless steel (1.4435 / 316L) |
| Sensor connection | | G 1/2 |
| Process connection | | welding adapter D30 |
| Surface characteristics Ra/Rz of the wetted parts | | 0.4 / 4 |

Accessories

| | | |
|------------------------|--|---------------|
| Accessories (supplied) | | O-rings:, FKM |
|------------------------|--|---------------|

Remarks

| | | |
|---------------|--|--------|
| Pack quantity | | 1 pcs. |
|---------------|--|--------|