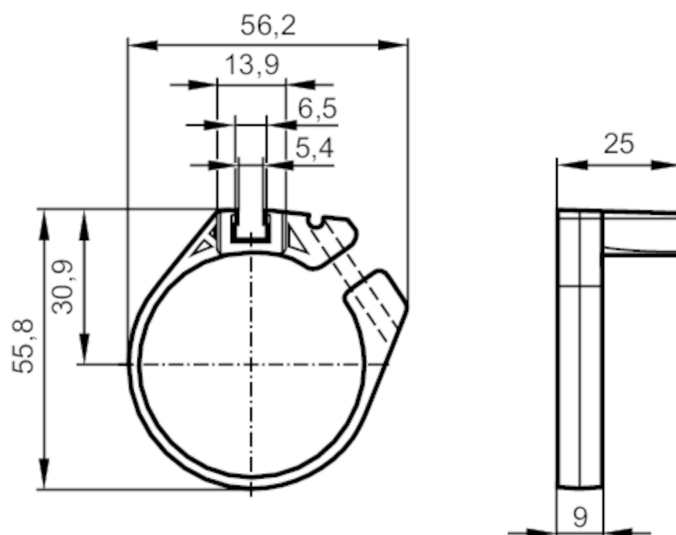


Clean-line cylinder mounting clamp for cylinder sensors

CLAMP FOR CLEAN LINE CYL 40/45



Application

Design	for types MKT
--------	---------------

Operating conditions

Ambient temperature	[°C]	0...50
---------------------	------	--------

Mechanical data

Weight	[g]	12.1
Materials	mounting clamp: POM; fixture: aluminium; screw: stainless steel	
Tightening torque	[Nm]	0.5; (Mounting screw)
Clamping range	[mm]	44...45
Piston diameter	[mm]	40

Accessories

Items supplied	socket head screws: 1 x SW2,5
----------------	-------------------------------

Remarks

Pack quantity	1 pcs.
---------------	--------

Diagrams and graphs

Installation

